

# **SALTER REX**

**Chartered Surveyors & Estate Agents**



## **ST CLEMENT'S COURT, ARUNDEL SQUARE, N7**

**£595,000 LEASEHOLD**

## RECEPTION / DINING AREA



### ST CLEMENT'S COURT, ARUNDEL SQUARE, N7

A stunning two bedroom split level apartment forming part of an impressive conversion of a Grade II listed church overlooking Arundel Square, within easy reach of the shops, restaurants and bars of Upper St and an array of shopping and transport amenities.

The property offers 1152 square feet of accommodation, presented to a high standard, with an abundance of period detail including high ceilings, large Gothic windows and exposed masonry.



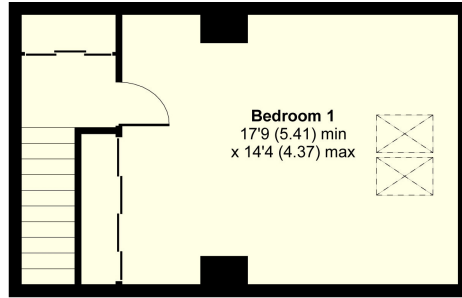
### BATHROOM

## BEDROOM 1

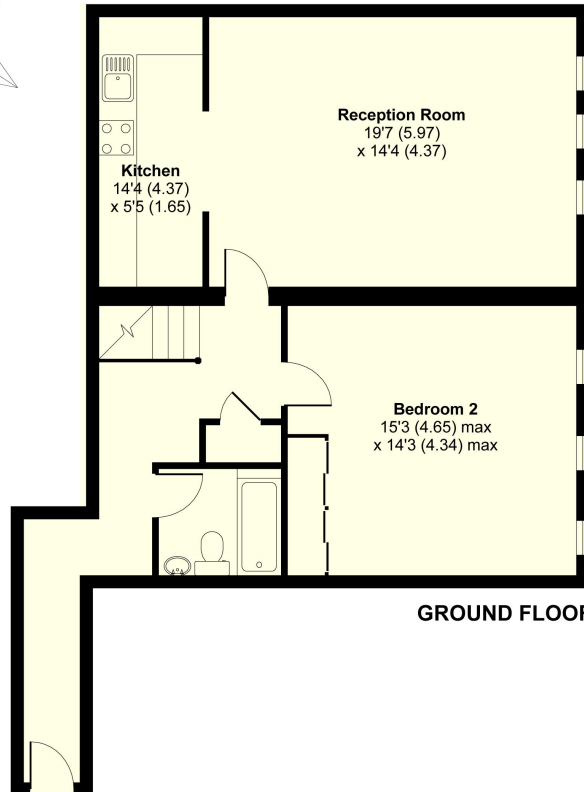


## BEDROOM 2

# FLOOR PLAN



FIRST FLOOR



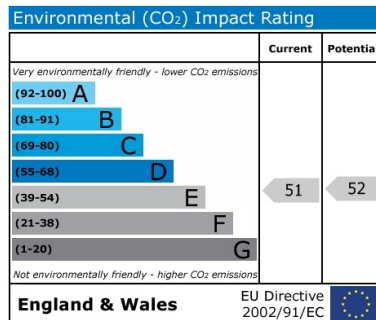
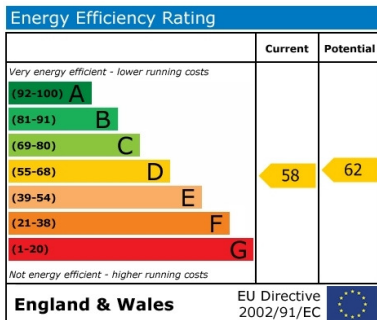
GROUND FLOOR

GROSS FLOOR AREA  
INTERNAL 1120 SQFT 104 SQMETRES

Arundel Square, London, N7

## ENERGY PERFORMANCE CHART

## CONTACT DETAILS



**SALTER REX**  
Chartered Surveyors & Estate Agents

SALTER REX KENTISH TOWN  
CROWN HOUSE  
265-267 KENTISH TOWN ROAD  
LONDON  
NW5 2TP

T 020 7482 4488 F 020 7485 8488

E: [residential@salter-rex.co.uk](mailto:residential@salter-rex.co.uk)

W: [www.salter-rex.co.uk](http://www.salter-rex.co.uk)