

SALTER REX

Chartered Surveyors & Estate Agents



BURGHLEY ROAD, NW5

£350,000 LEASEHOLD

LOUNGE



BURGHLEY ROAD, NW5

A spacious and well appointed raised ground floor one bedroom flat, forming part of a handsome Victorian terraced house, situated in a desirable residential side turning within a short walking distance of Kentish Town Underground.

The property offers 704 square feet of accommodation including a particularly large reception room, opening through patio doors onto a balcony overlooking the rear garden



BEDROOM

Salter Rex Residential Estate Agents for themselves and for the Vendors or Lessors of this property whose Agents they are, give notice that:-

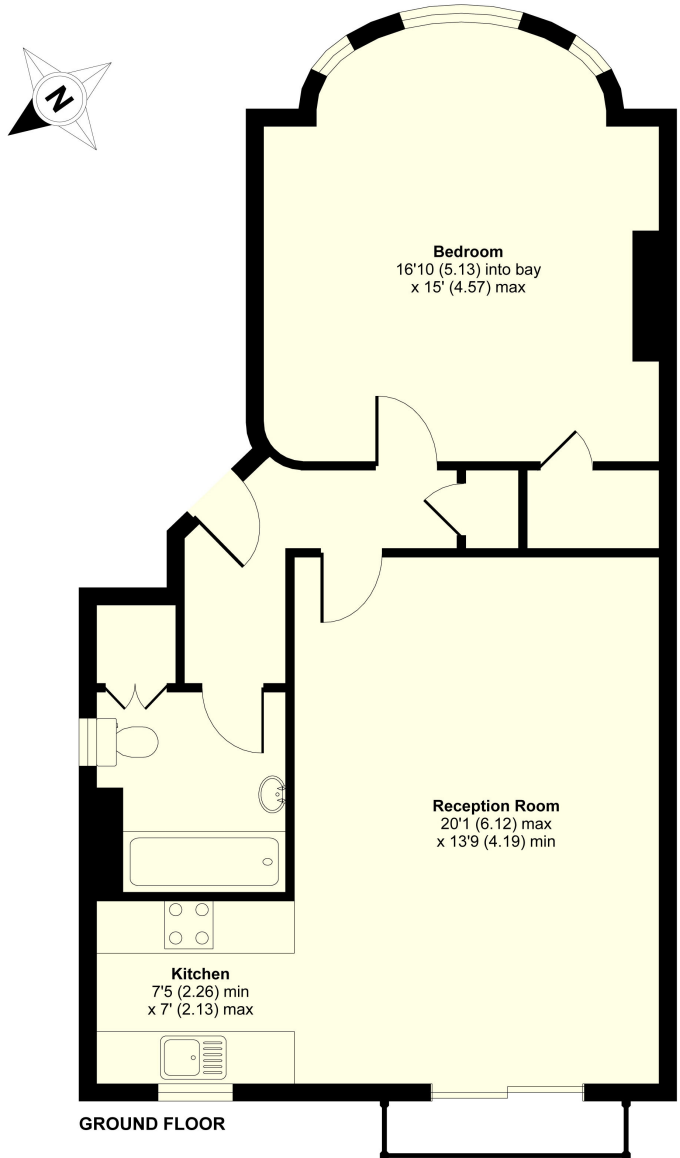
1. These particulars do not constitute, nor constitute any part of, an offer or contract. Statements contained in these particulars as to this property are made without responsibility on the part of Salter Rex, the Vendors or Lessors. None of the statements contained in these particulars as to this property are to be relied upon as statements or representation of fact. All dimensions given are approximate only.
2. Any intending purchasers must satisfy themselves by inspection or otherwise as to the correctness of each of the statements contained in these particulars. The Vendor or Lessor does not make or give and neither Salter Rex Residential nor any person in their employment has any authority to make or give any representation or warranty whatsoever in relation to this property.

KITCHEN



BATHROOM

FLOOR PLAN

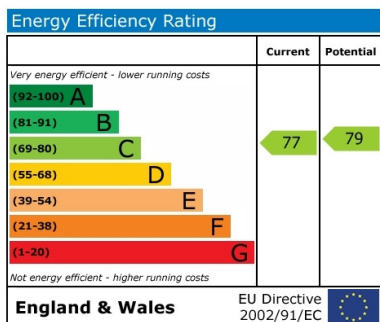


GROUND FLOOR

GROSS FLOOR AREA
INTERNAL 704 SQFT 65.4 SQMETRES

Burghley Road, London, NW5

ENERGY PERFORMANCE CHART



CONTACT DETAILS

SALTER REX
Chartered Surveyors & Estate Agents

SALTER REX KENTISH TOWN
CROWN HOUSE
265-267 KENTISH TOWN ROAD
LONDON
NW5 2TP

T 020 7482 4488 F 020 7485 8488
E: residential@salter-rex.co.uk
W: www.salter-rex.co.uk

