



A fine London townhouse

GREEN STREET • MAYFAIR W1







A fine London townhouse

GREEN STREET • MAYFAIR W1



Behind an imposing Portland stone facade this grand residence of approx 7,000 sq ft opens directly into private communal gardens.

Offering finely proportioned accommodation, with a wonderfully bright garden room opening onto a roof terrace on the top floor.





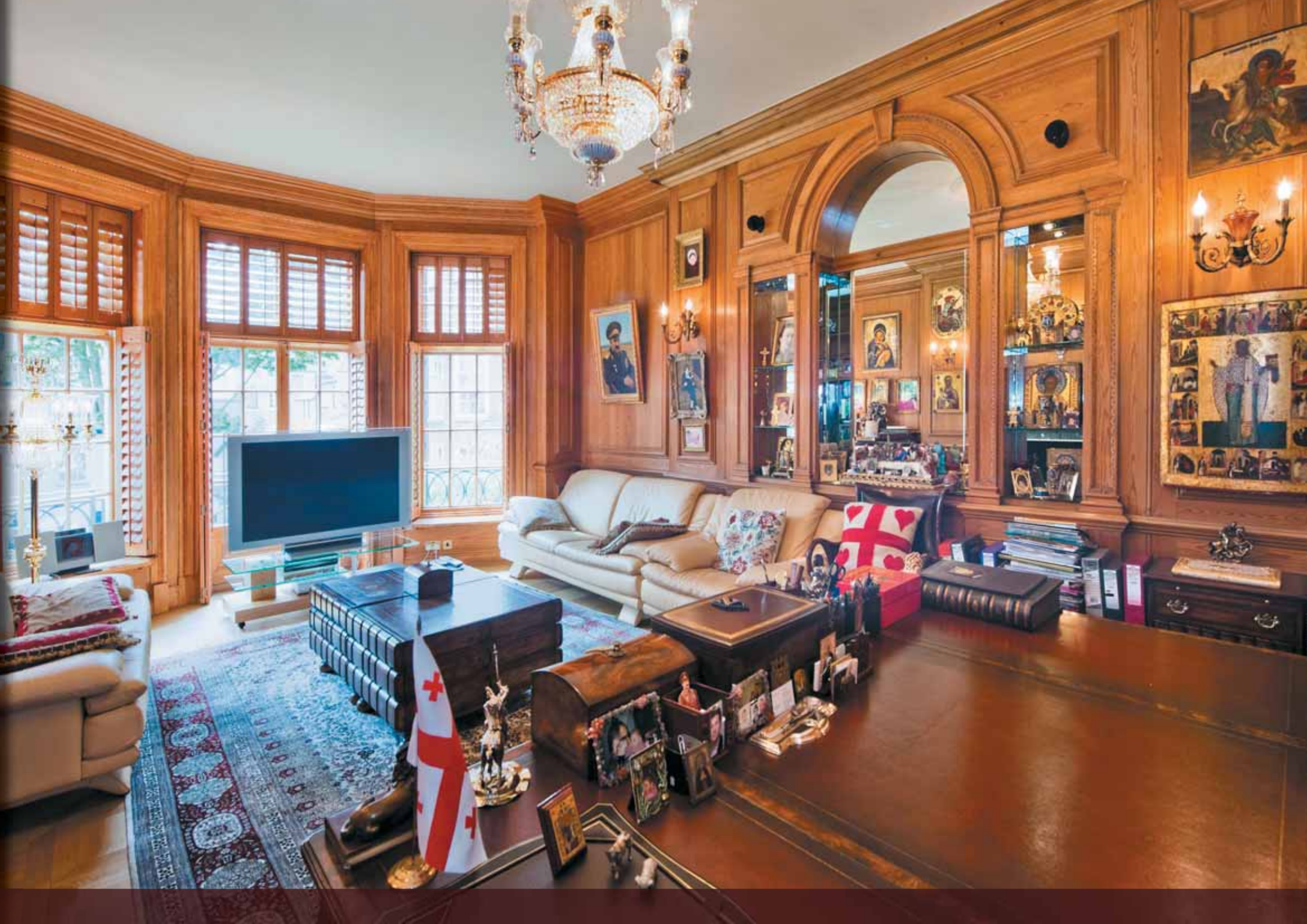
Accommodation

Master bedroom suite, 4 further bedroom suites, staff bedroom, further shower room, reception hall, 2 reception rooms, dining room, garden room, kitchen/breakfast room, staff/prep kitchen, laundry room, 3 cloakrooms, roof terrace, patio.

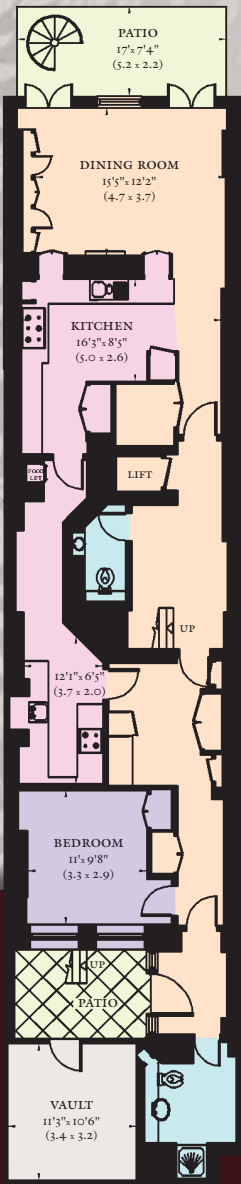
Amenities

Lift & dumb waiter, vaults, air cooling, mood lighting, wired for a Crestron AV system.

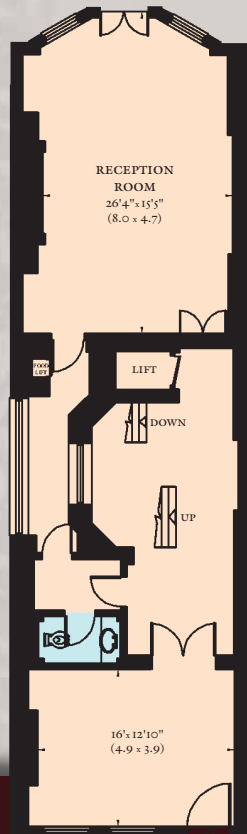




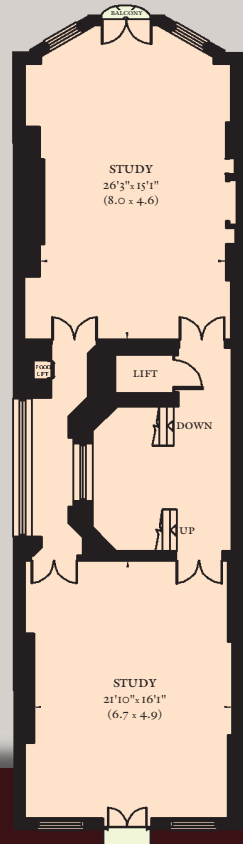




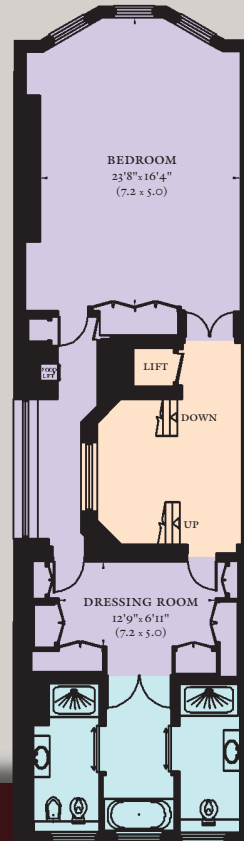
Lower Ground Floor



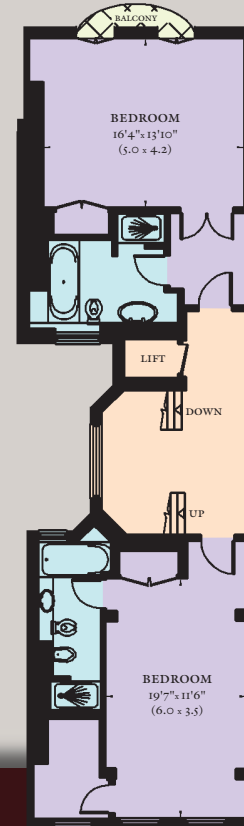
Upper Ground Floor



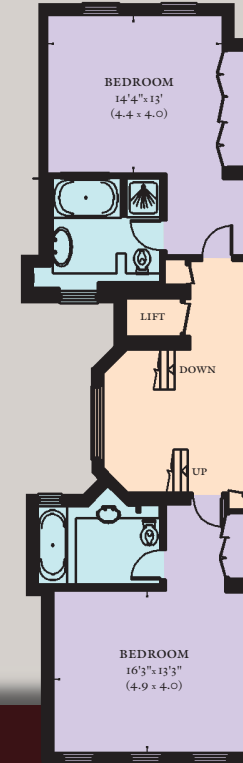
First Floor



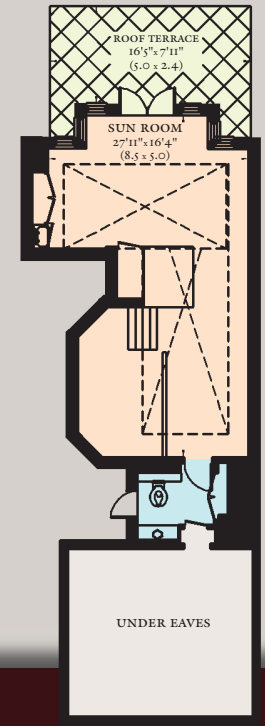
Second Floor



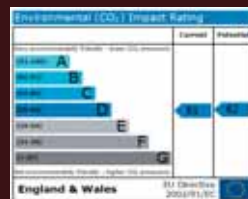
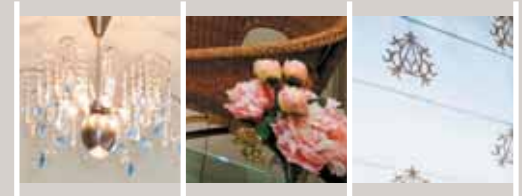
Third Floor



Fourth Floor



Fifth Floor



GREEN STREET • MAYFAIR W1

Gross internal area: 645 sq m (6,937 sq ft)
Including Vault • Excluding Under Eaves



GREEN STREET •
MAYFAIR W1

Freehold
£16,000,000

Wetherell have no authority to make or give any representations or warranties in relation to the property. These particulars do not form part of any offer or contract and must not be relied upon as statements or representations of fact. Any areas, measurements or distances are approximate. The text, photographs and plans are for guidance only and are not necessarily comprehensive. It should not be assumed that the property has all the necessary planning, building regulation or other consents and neither Wetherell nor and joint agents have tested any services, equipment or facilities. Tenants must satisfy themselves by inspection or otherwise.



WETHERELL

MAYFAIR'S FINEST PROPERTIES

102 Mount Street · London · W1K 2TH

020 7529 5566

wetherell.co.uk