

## BOURDON STREET

MAYFAIR W1



A second floor two bedroom flat (944 Square Feet)  
in this modern Mayfair block quietly located  
at the end of this street behind Berkeley Square.

£915,000

SOLE AGENT



T: +44 (0) 20 7493 6935  
E: [mail@wetherell.co.uk](mailto:mail@wetherell.co.uk)  
[wetherell.co.uk](http://wetherell.co.uk)  
102 Mount Street · London · W1K 2TH





# BOURDON STREET

MAYFAIR W1

Behind Berkeley Square and at the end of this quiet mews with a passageway to Bond Street, an outstanding value second floor two bedroom flat in this modern block built in the late 1980's around a gated courtyard.

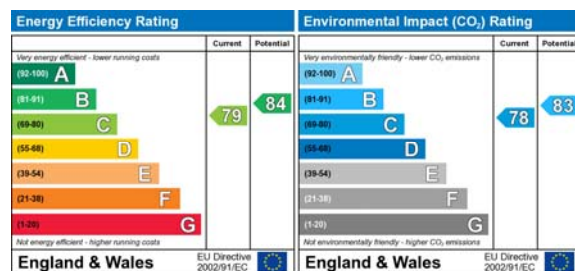
- \* Entrance Hall
- \* Reception Room
- \* Kitchen
- \* Two Bedrooms
- \* Two Bathrooms (One En Suite)
- \* Independent Central Heating & Hot Water
- \* Caretaker
- \* Lift
- \* 944 Square Feet

Tenure: Leasehold, approximately 54 years unexpired

Ground Rent: To Be Confirmed

Service Charge: To Be Confirmed

**Price: £915,000**



Wetherell & Co have no authority to make or give any representation or warranty whatever in relation to this property. These particulars do not form part of any offer or contract nor be relied upon as statements or representations of fact. All statements contained in these particulars as to this property are made without responsibility on the part of the agent. Any areas, measurements or distances, text, photographs and plans are for guidance only and are not necessarily comprehensive. It should not be assumed that the property has all the necessary planning, building regulation or other consents and Wetherell have not tested any services, equipment or facilities. Purchasers must satisfy themselves by inspection or otherwise. Details Prepared June 2010



# BOURDON STREET

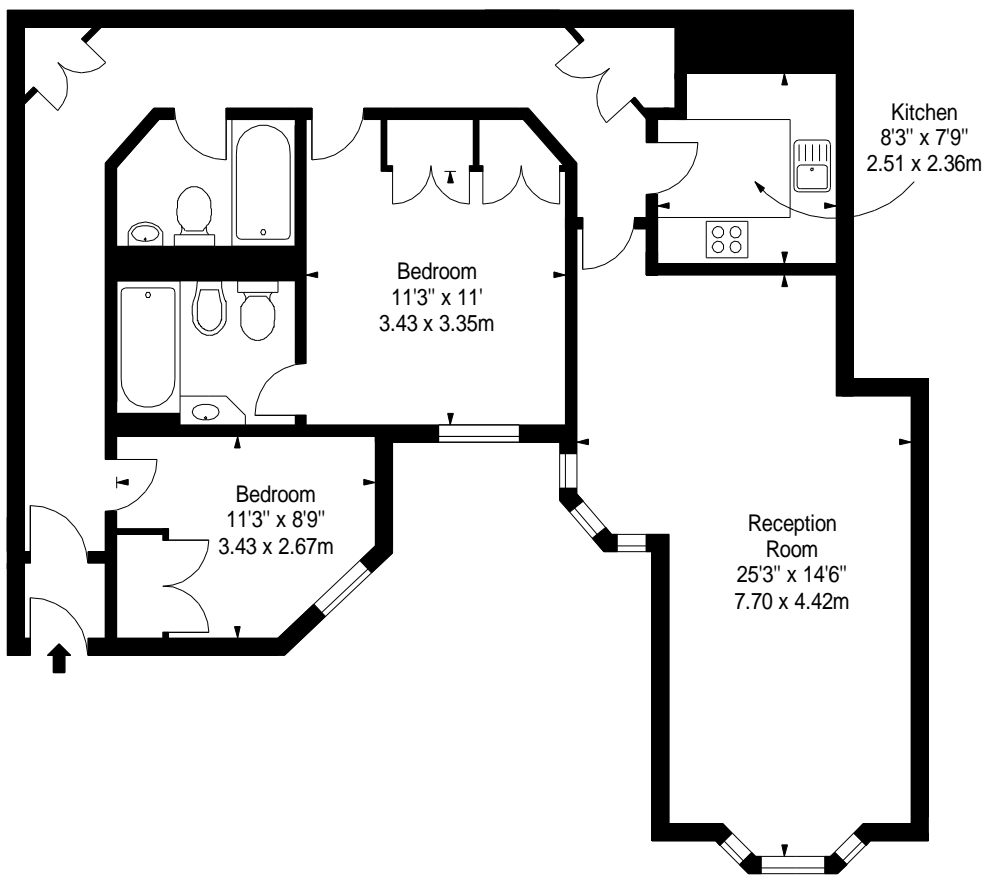
MAYFAIR W1



**BOURDON STREET,  
MAYFAIR, W1**

Approx. Gross Internal Area \*  
**944 Ft<sup>2</sup> - 87.69 M<sup>2</sup>**

Illustration For Identification Purposes Only. Not to Scale  
\* As Defined by RICS - Code of Measuring Practice



SECOND FLOOR

**BKR**

[www.bkrfloorplans.co.uk](http://www.bkrfloorplans.co.uk)  
T: 0845 257 2023  
© BKR 2010