

# **SALTER REX**

**Chartered Surveyors & Estate Agents**



**ALLCROFT ROAD, NW5**

**£470,000 LEASEHOLD**

## LOUNGE



## ALLCROFT ROAD, NW5

A superior three bedroom maisonette, arranged over the upper two floors of a handsome Victorian Terraced house, set in a pleasant residential side turning, within easy reach of Chalk Farm Underground and Hampstead Heath.

Bright and spacious, with a large reception and eat-in kitchen, the property is presented to a high standard.

To the rear, a good-size terrace leads to the private rear garden.

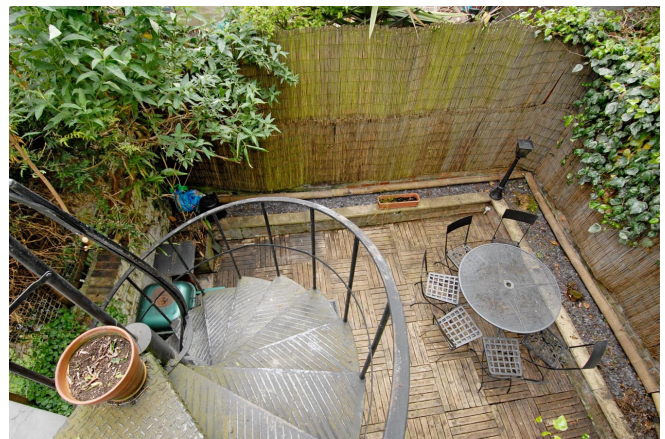


## BEDROOM ONE

## KITCHEN

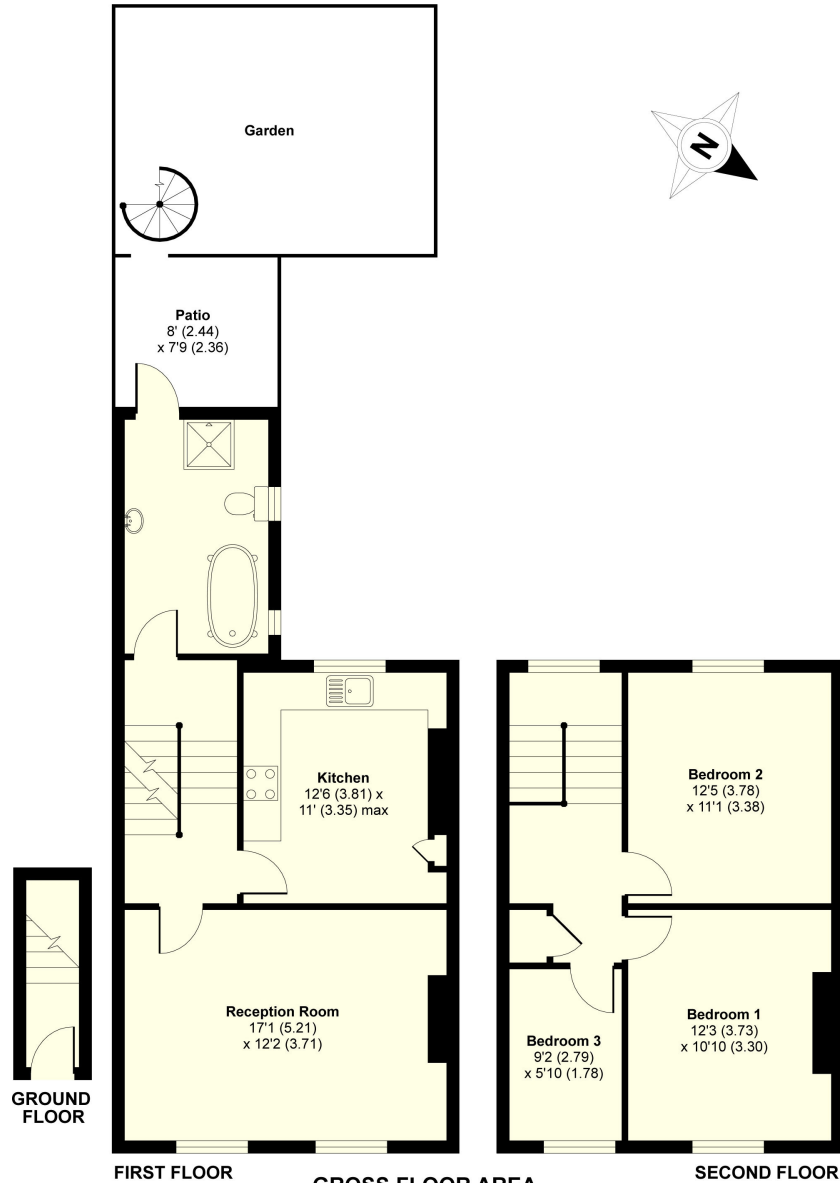


## BATHROOM



## TERRACE

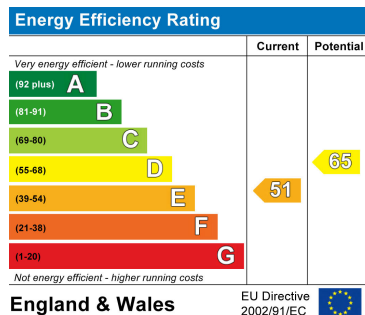
# FLOOR PLAN



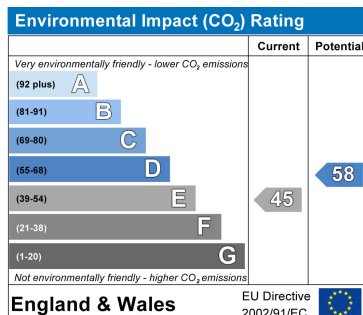
FIRST FLOOR      GROSS FLOOR AREA      SECOND FLOOR  
 INTERNAL 990 SQFT 91.9 SQMETRES

**Allcroft Road London NW5**

## ENERGY PERFORMANCE CHART



## CONTACT DETAILS



**SALTER REX**  
 Chartered Surveyors & Estate Agents

SALTER REX KENTISH TOWN  
 CROWN HOUSE  
 265-267 KENTISH TOWN ROAD  
 LONDON  
 NW5 2TP  
 T 020 7482 4488 F 020 7485 8488  
 E: [residential@salter-rex.co.uk](mailto:residential@salter-rex.co.uk)  
 W: [www.salter-rex.co.uk](http://www.salter-rex.co.uk)