

HAY HILL

MAYFAIR W1



Upon Instructions of LPA Receiver

A Mayfair Pied-a-Terre (683 square feet) on the top floor of this portered mansion block just off Berkeley Square

£775,000
SOLE AGENT



T: +44 (0) 20 7493 6935
E: mail@wetherell.co.uk
wetherell.co.uk
102 Mount Street · London · W1K 2TH





HAY HILL

MAYFAIR W1

Hay Hill derives its name from Hay Hill Farm, as the lands around Berkeley Square were known before the area was developed in the late 1600's.

This large one bedroom flat is on the seventh (top) floor of this period mansion block with a grand entrance foyer, passenger lift and resident porter.

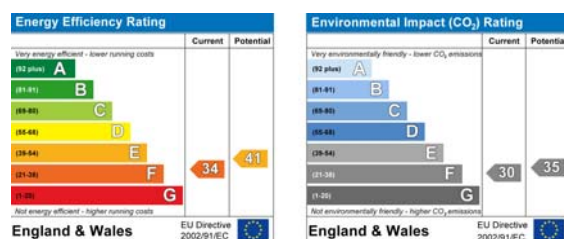
- * Entrance Hall
- * Reception Room
- * Kitchen
- * Bedroom
- * Bathroom
- * 683 Square Feet
- * Lift
- * Porter

Tenure: Leasehold, approximately 65 years unexpired

Ground Rent: £40 per annum

Service Charge: to be confirmed

Price: £775,000

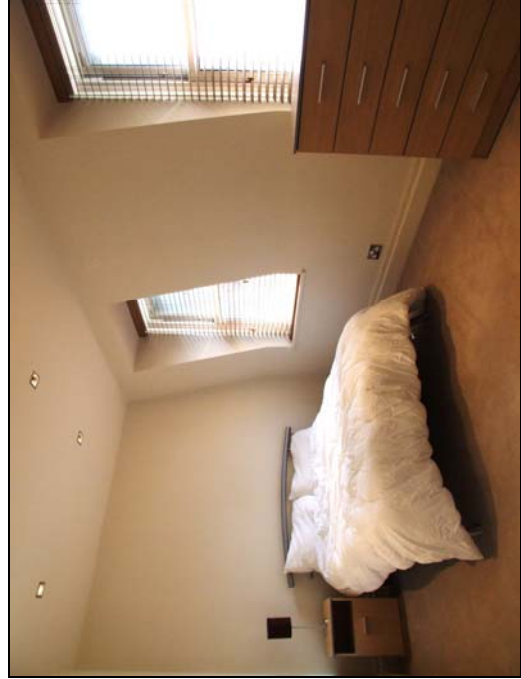


Wetherell & Co have no authority to make or give any representation or warranty whatever in relation to this property. These particulars do not form part of any offer or contract nor be relied upon as statements or representations of fact. All statements contained in these particulars as to this property are made without responsibility on the part of the agent. Any areas, measurements or distances, text, photographs and plans are for guidance only and are not necessarily comprehensive. It should not be assumed that the property has all the necessary planning, building regulation or other consents and Wetherell have not tested any services, equipment or facilities. Purchasers must satisfy themselves by inspection or otherwise. June 2010



HAY HILL

MAYFAIR W1



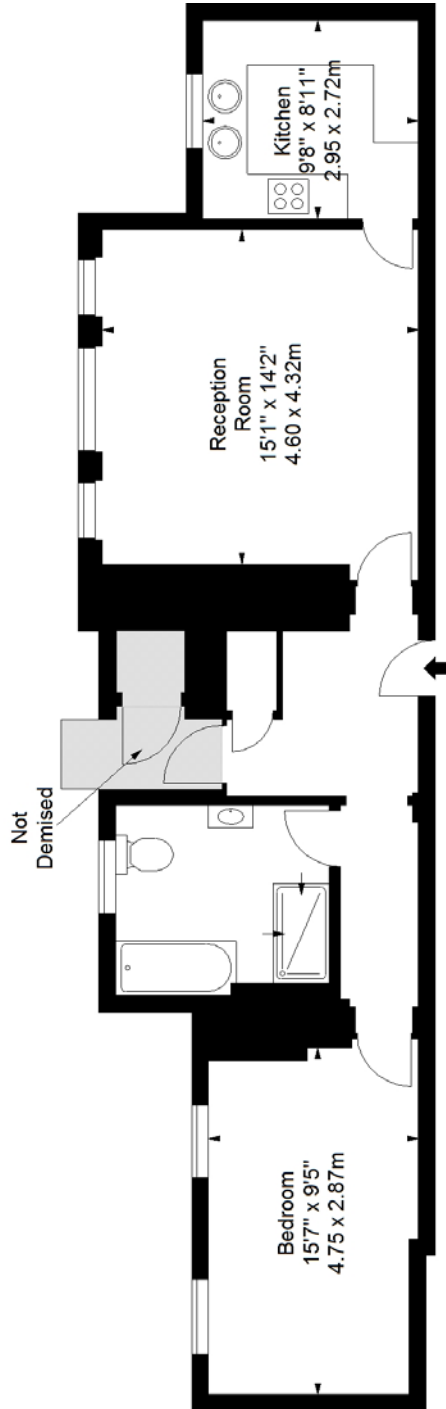


HAY HILL MAYFAIR W1

BERKELEY HOUSE, HAY HILL MAYFAIR, W1

APPROX. GROSS INTERNAL AREA *
683 FT² - 63.45 M²

ILLUSTRATION FOR IDENTIFICATION PURPOSES ONLY. NOT TO SCALE
*As Defined by RICS - Code of Measuring Practice



SEVENTH FLOOR

BKR

www.bkrproperties.co.uk
T: 08452 527833
© BKR 2010