

SHEPHERDS PLACE

MAYFAIR W1



A Rare Private Gem - Grade II Listed Freehold House
(1415 square feet) just off Grosvenor Square

£2,250,000

SOLE AGENT



T: +44 (0) 20 7493 6935
E: mail@wetherell.co.uk
wetherell.co.uk
102 Mount Street · London · W1K 2TH





SHEPHERDS PLACE

MAYFAIR W1

An elegant Grade II listed Mayfair house situated in a quiet pedestrianised street running between Upper Brook Street and Lees Place.

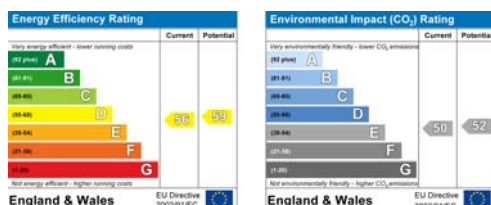
Arranged over four floors the house offers light and surprisingly spacious accommodation with two reception floors and two bedroom suites.

There is possible scope for a roof terrace subject to all relevant planning permissions.

- * Entrance Lobby
- * Reception Room
- * Dining room
- * Kitchen
- * Master Bedroom with En Suite Bathroom & Shower
- * Double Bedroom with En Suite Bathroom & Shower
- * Guest Cloakroom
- * Under Pavement Storage Vaults
- * Air conditioning
- * Surround sound system

Tenure: Freehold

Price: £2,250,000



Wetherell & Co have no authority to make or give any representation or warranty whatever in relation to this property. These particulars do not form part of any offer or contract nor be relied upon as statements or representations of fact. All statements contained in these particulars as to this property are made without responsibility on the part of the agent. Any areas, measurements or distances, text, photographs and plans are for guidance only and are not necessarily comprehensive. It should not be assumed that the property has all the necessary planning, building regulation or other consents and Wetherell have not tested any services, equipment or facilities. Purchasers must satisfy themselves by inspection or otherwise. Details Prepared April 2010



SHEPHERDS PLACE

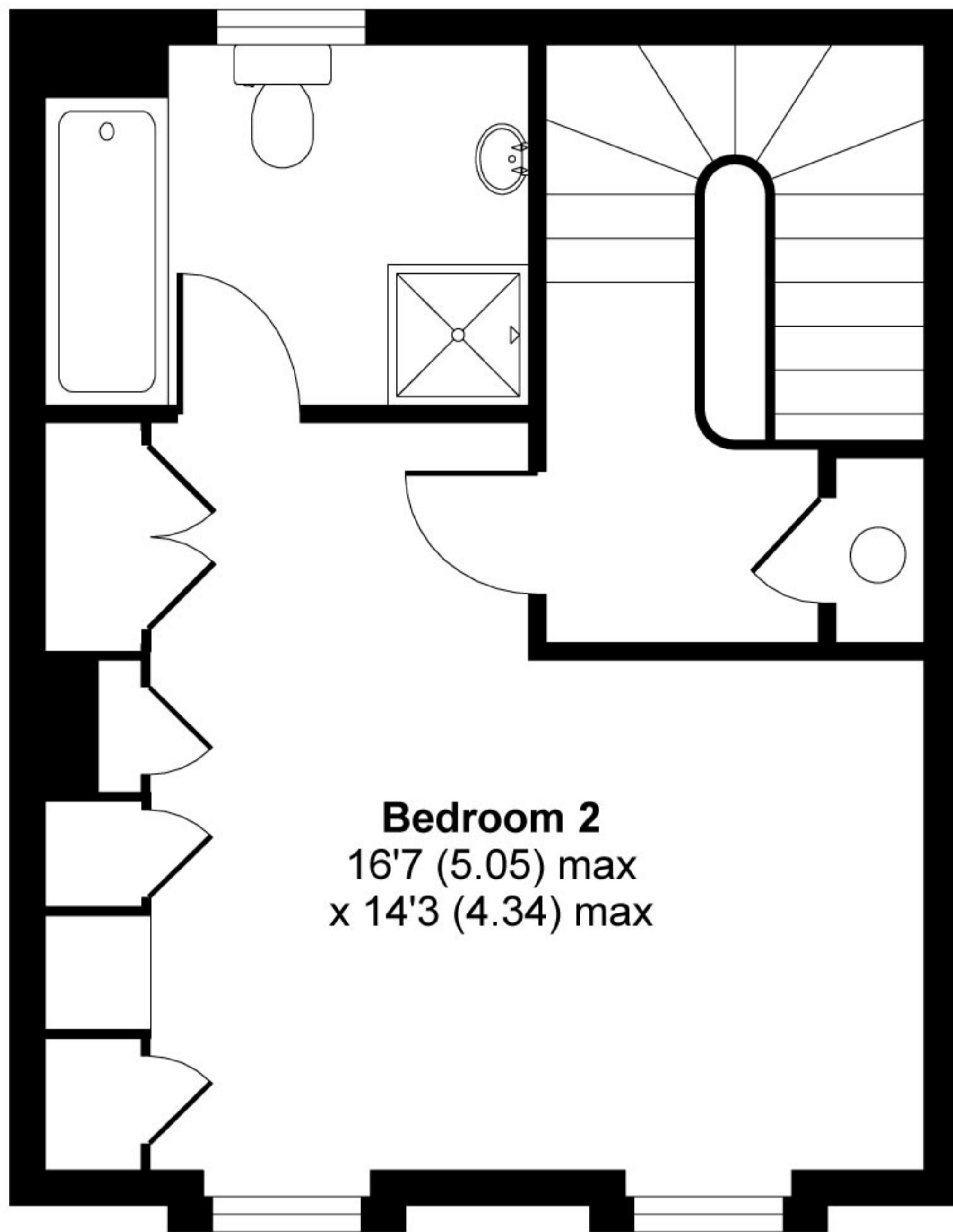
MAYFAIR W1



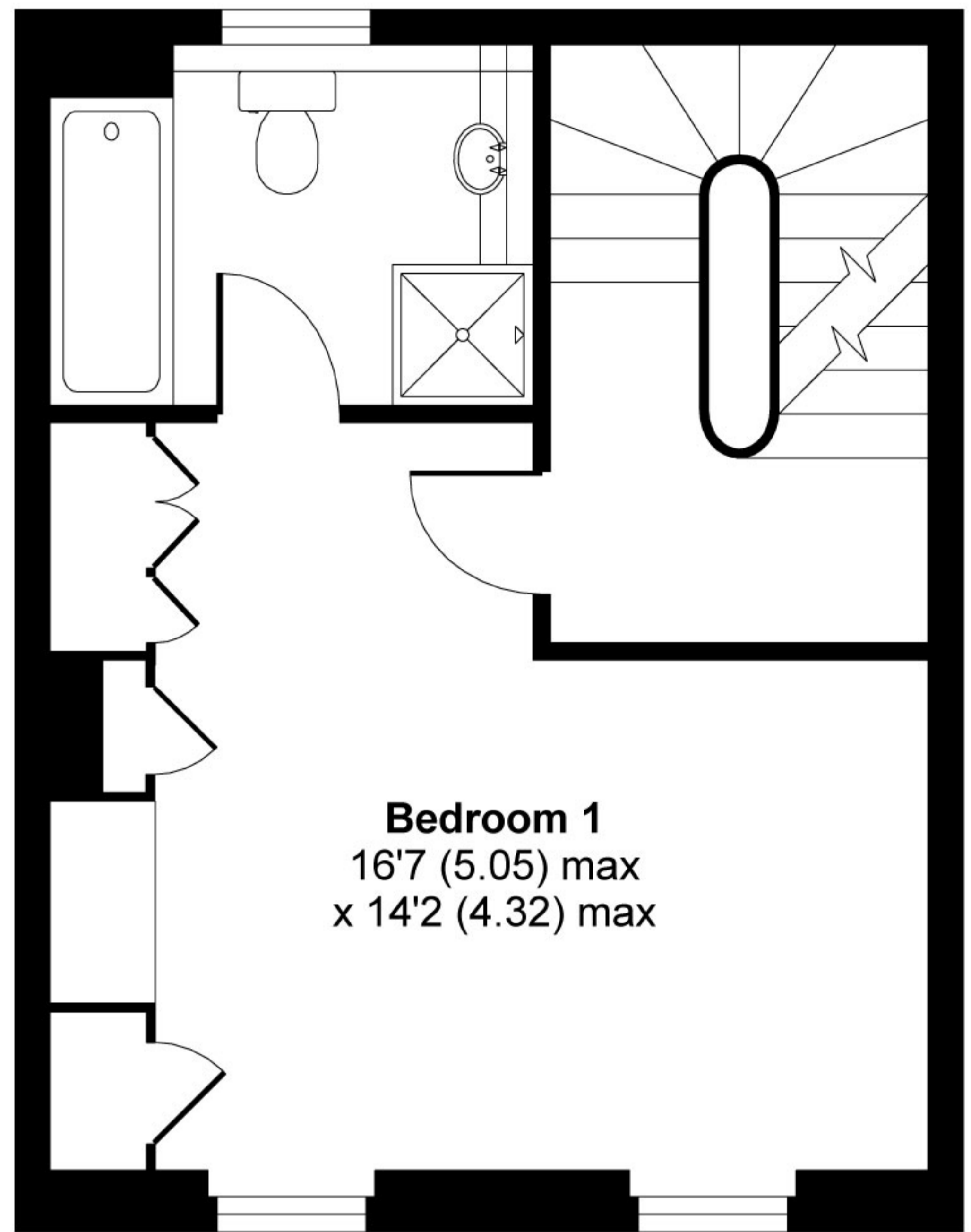


Shepherds Place, London, W1K

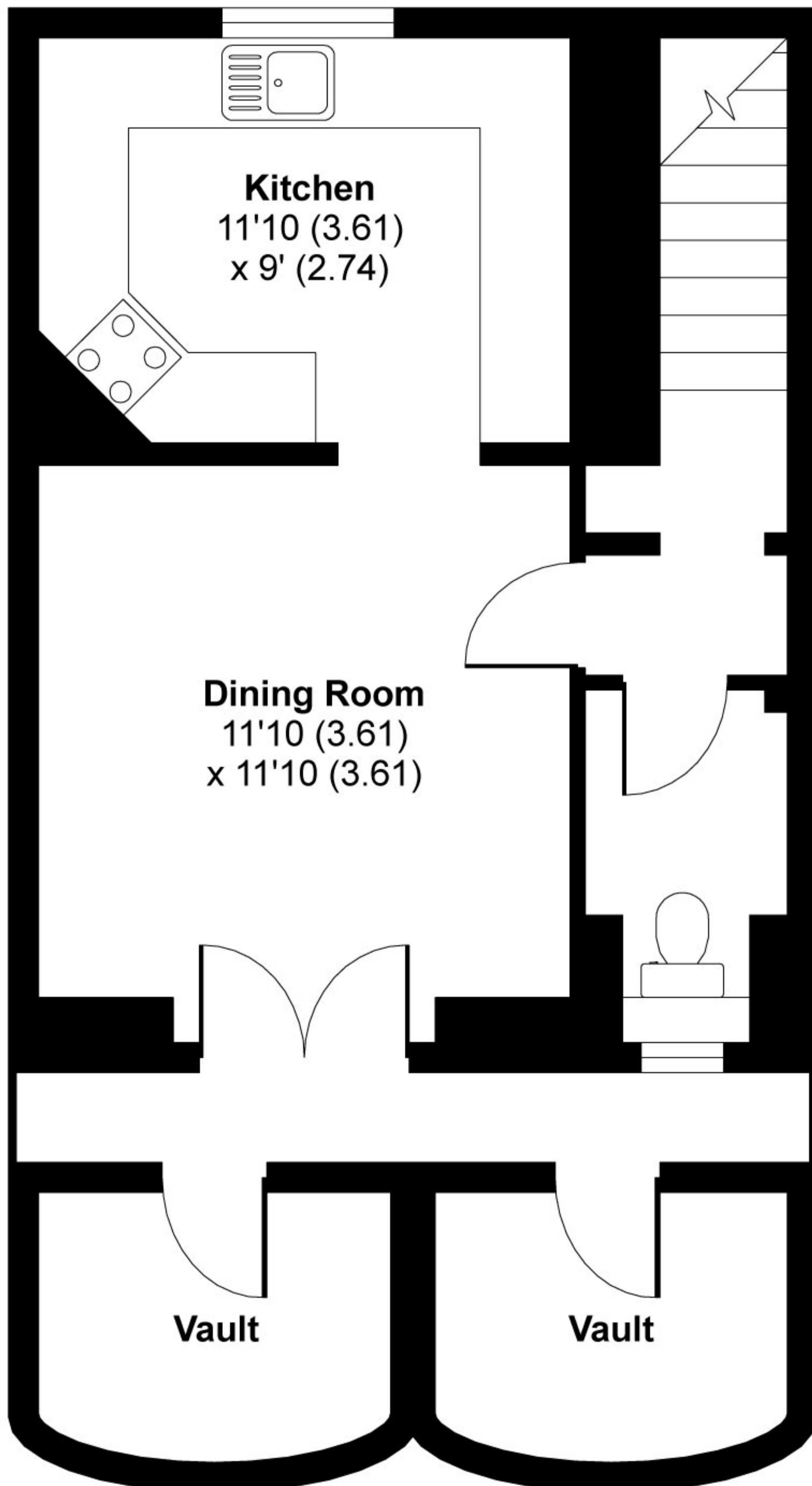
APPROX. GROSS INTERNAL FLOOR AREA 1415 SQFT / 131.4 SQM (Excludes Outbuilding)



SECOND FLOOR

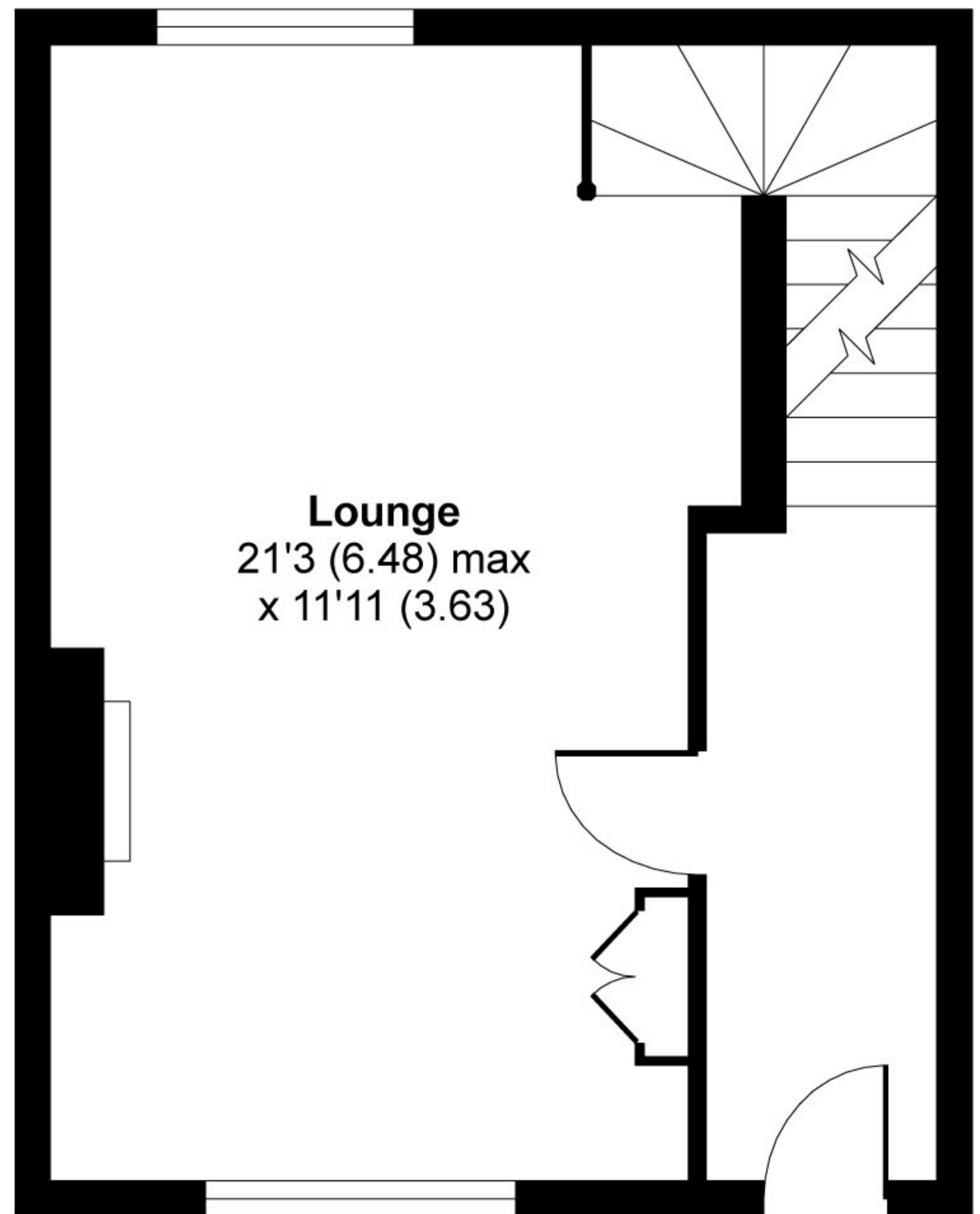


FIRST FLOOR

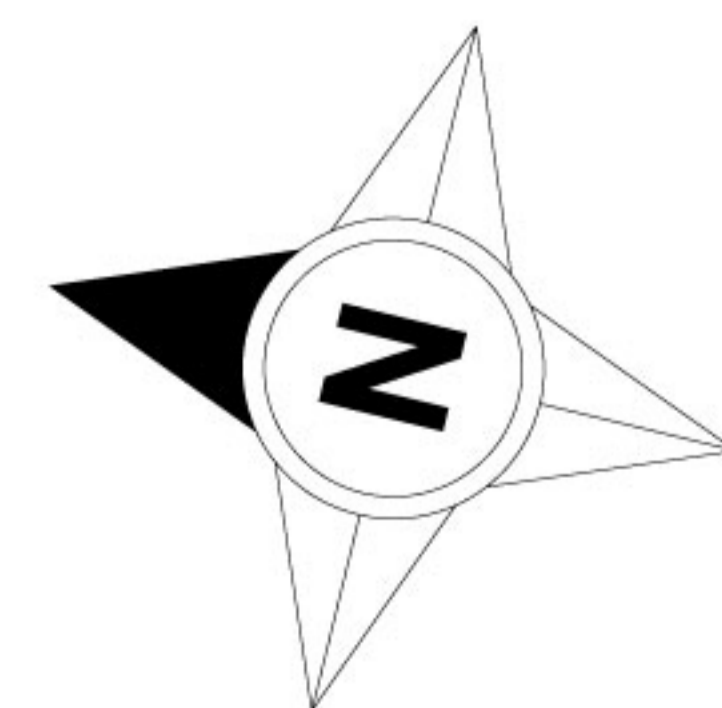


OUTBUILDING

LOWER
GROUND
FLOOR



GROUND FLOOR



Whilst every attempt has been made to ensure the accuracy of the floor plans contained here, measurements of doors, windows and rooms are approximate and no responsibility is taken for any error, omission or mis-statement. These plans are for representation purposes only as defined by RICS Code of Measuring Practice and should be used as such by any prospective purchaser. The services, systems and appliances listed in this specification have not been tested by Wetherell and no guarantee as to their operating ability or their efficiency can be given.