

SALTER REX

Chartered Surveyors & Estate Agents



**TREMLETT GROVE,
LONDON, N19**

£1,050,000 FREEHOLD

RECEPTION



TREMLETT GROVE, N19

An exceptional five bedroom end terrace Victorian house, situated in a quiet residential location off Dartmouth Park Hill, within easy reach of Tufnell Park Underground.

The property has been subject to a comprehensive programme of refurbishment works to a meticulous standard with high quality modern finishing throughout.

The attractive split level Westerley rear garden extends to 61ft



BEDROOM

KITCHEN

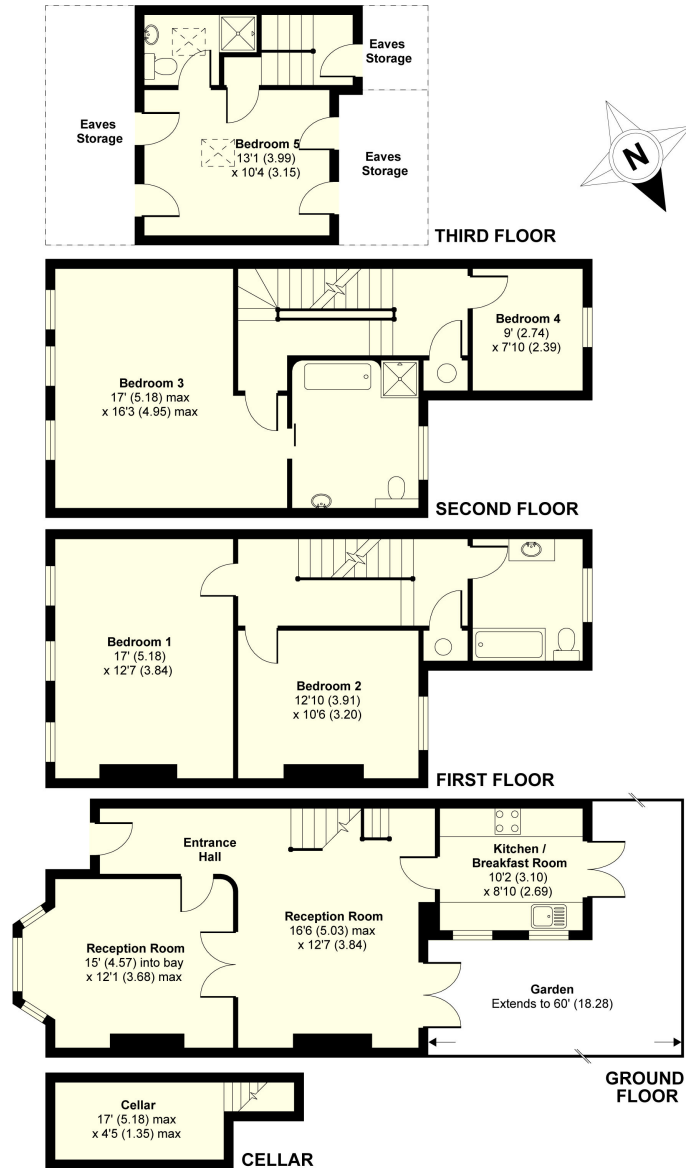


BATHROOM



GARDEN

FLOOR PLAN

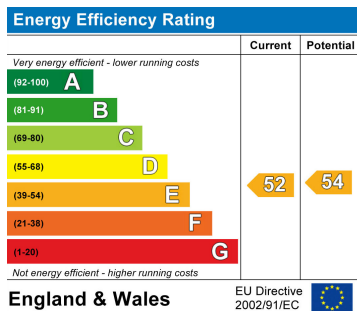


GROSS FLOOR AREA
INTERNAL 1906 SQFT 177.1 SQMETRES

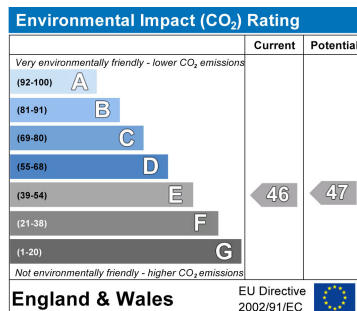
Tremlett Grove, Archway, London N19

Whilst every attempt has been made to ensure the accuracy of the floor plans contained here, measurements of doors, windows and rooms are approximate and no responsibility is taken for any error, omission or mis-statement. These plans are for representation only.

ENERGY PERFORMANCE CHART



CONTACT DETAILS



SALTER REX
 Chartered Surveyors & Estate Agents

SALTER REX KENTISH TOWN
 CROWN HOUSE
 265-267 KENTISH TOWN ROAD
 LONDON
 NW5 2TP

T 020 7482 4488 F 020 7485 8488
 E: residential@salter-rex.co.uk
 W: www.salter-rex.co.uk