



3 & 7 RED LION YARD
— MAYFAIR WI —



3 & 7 RED LION YARD

MAYFAIR W1



Two freehold houses

to be sold jointly in this cobbled courtyard at the western end of Charles Street.



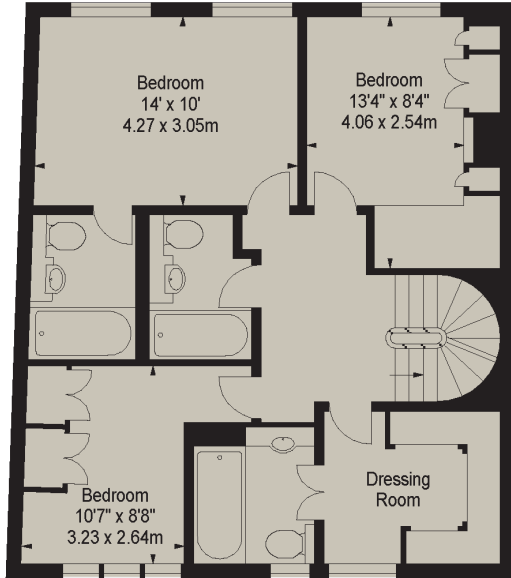
Red Lion Yard first appears on a map dated 1756 showing the layout of the Berkeley Estate, the original freeholder whose lands extended to the west of Berkeley Square.

With just six houses, Red Lion Yard is a superbly situated sanctuary and this rare opportunity has arisen to acquire these two homes opposite each other.

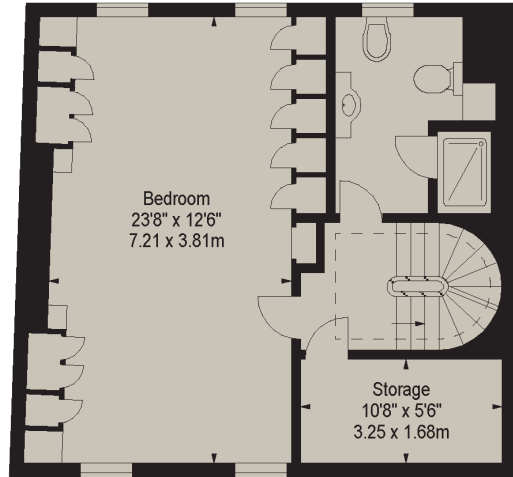


3 RED LION YARD

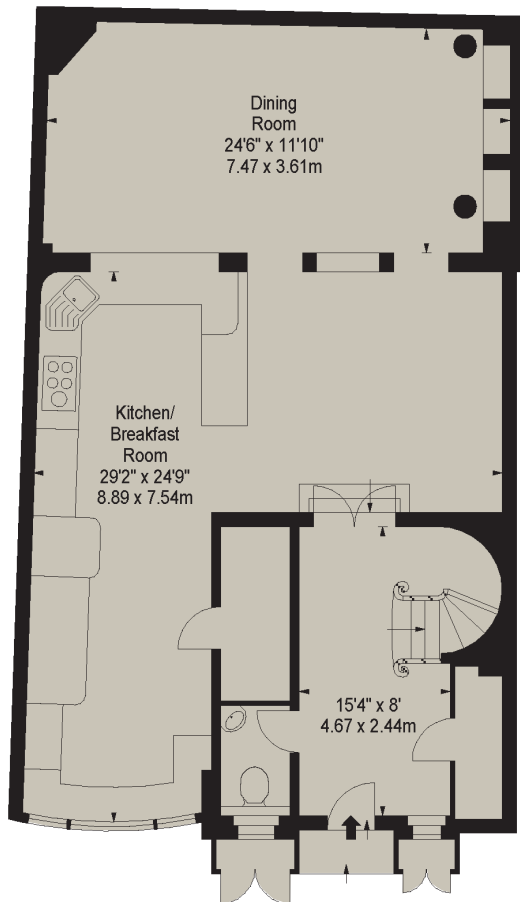
Approximate Gross Internal Area
3,079 sq ft (286.04 sq m)



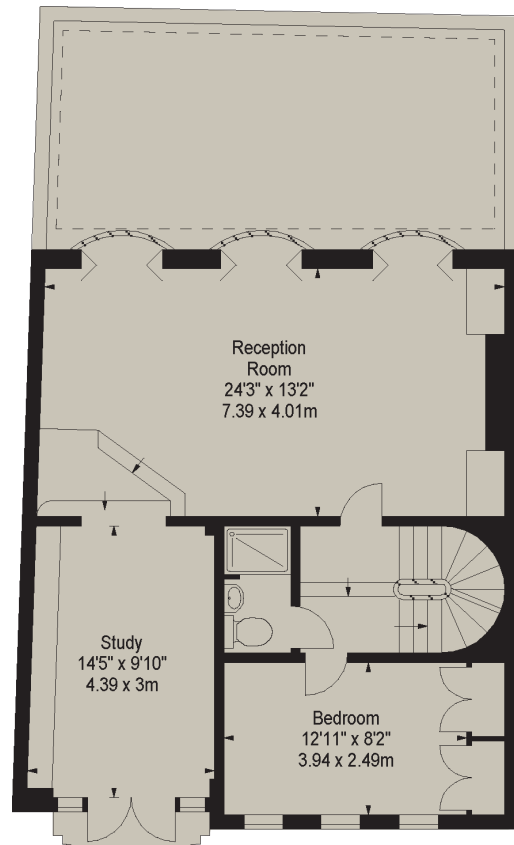
SECOND FLOOR



THIRD FLOOR



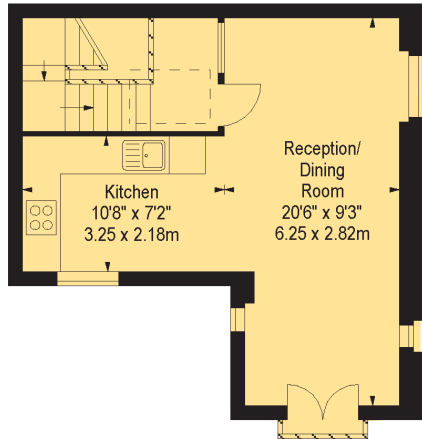
GROUND FLOOR



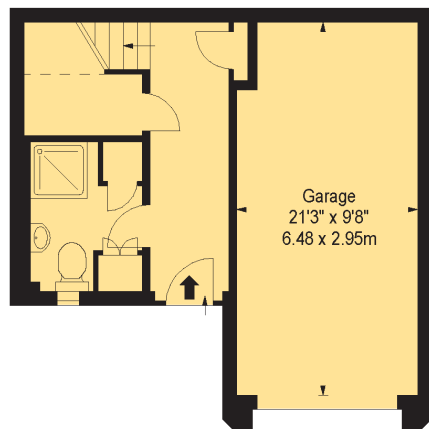
FIRST FLOOR

7 RED LION YARD

Approximate Gross Internal Area
1,036 sq ft (96.24 sq m)



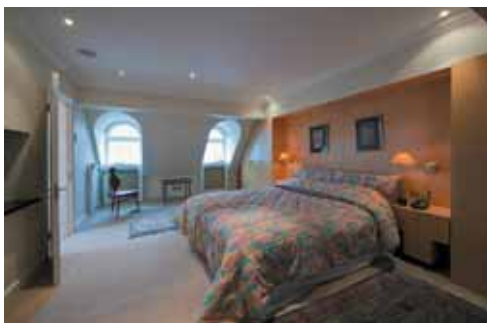
SECOND FLOOR



GROUND FLOOR



FIRST FLOOR

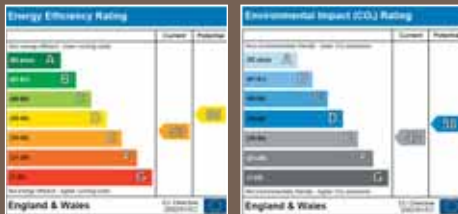


3 RED LION YARD

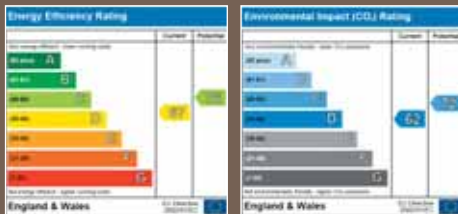
- Entrance Hall ■ Drawing Room
- Family Room ■ Study ■ Conservatory
- Kitchen/Breakfast Room ■ Five Bedrooms
- Two Bathrooms & Two Shower Rooms ■ 3,079 Sq Ft

7 RED LION YARD

- Entrance Hall ■ Reception Room
- Kitchen ■ Two Bedrooms ■ Bathroom
- Shower Room ■ Garage ■ 1,036 Sq Ft



3 RED LIONYARD



7 RED LIONYARD

Freehold
 £6,750,000
 Sole Agent

WETHERELL
 MAYFAIR'S FINEST PROPERTIES
 102 Mount Street · London · W1K 2TH
 020 7529 5566
 wetherell.co.uk

Wetherell have no authority to make or give any representations or warranties in relation to the property. These particulars do not form part of any offer or contract and must not be relied upon as statements or representations of fact. Any areas, measurements or distances are approximate. The text, photographs and plans are for guidance only and are not necessarily comprehensive. It should not be assumed that the property has all the necessary planning, building regulation or other consents and Wetherell have not tested any services, equipment or facilities. Purchasers must satisfy themselves by inspection or otherwise. August 2010.