



GROSVENOR SQUARE MAYFAIR W1

A fourth floor flat (2,049 square feet) featuring a dual aspect from 17 windows on the corner of Grosvenor Square

GROSVENOR SQUARE MAYFAIR WI

Located on the south west corner of Grosvenor Square in this apartment building constructed circa 1950, a fourth floor flat with 17 windows giving varying views of the Square and its garden.





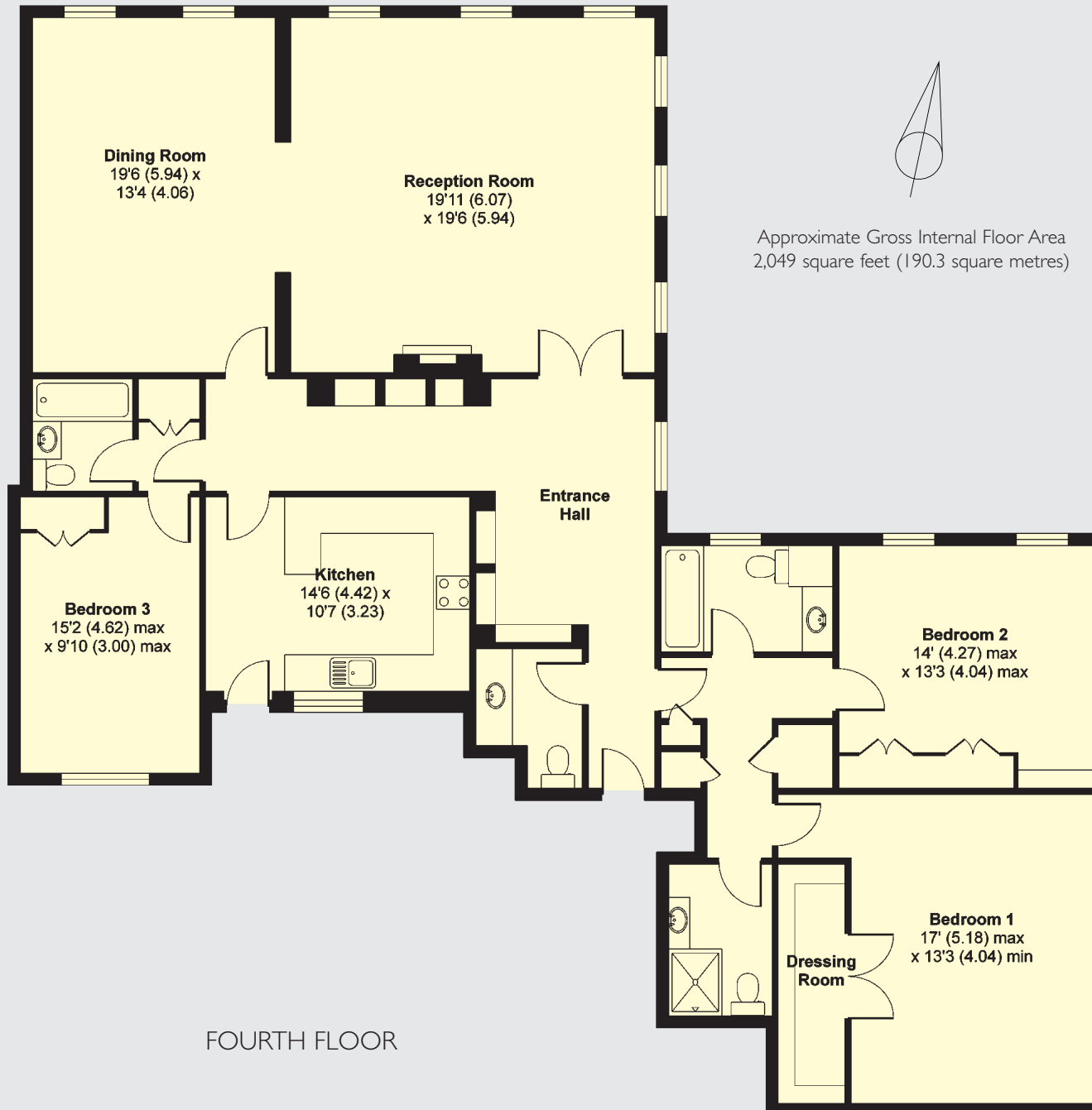
Approached from South Audley Street the building has a spacious entrance foyer manned by porters and 24 hour security whilst the flat features comfort cooling and two adjoining reception rooms totalling in excess of 32' in length. In addition, there is a storage room on the 6th floor and a parking space in the basement car park.



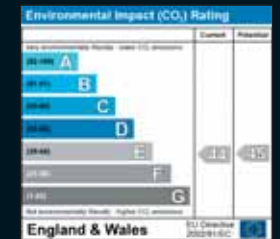
Accommodation and Amenities

- Entrance Hall
- Two Reception Rooms
- Kitchen
- Three Bedrooms
- Three Bathrooms
- Guest Cloakroom
- Comfort Cooling
- Underground Parking
- Storage Room
- 24 Hour Porterage & Security
- 2,049 Sq Ft

GROSVENOR SQUARE MAYFAIR WI



FOURTH FLOOR



Tenure: Leasehold, approximately 14 years unexpired

Under the terms of the Leasehold Reform Acts, a 90 year lease extension is available. Further details on request.

Ground Rent: £50 per annum

Service Charge: £18,900 approximately for 2010

Price: £2,950,000 subject to contract

Sole Agent

WETHERELL
MAYFAIR'S FINEST PROPERTIES

102 Mount Street · London · W1K 2TH

020 7529 5566
wetherell.co.uk

Wetherell have no authority to make or give any representations or warranties in relation to the property. These particulars do not form part of any offer or contract and must not be relied upon as statements or representations of fact. Any areas, measurements or distances are approximate. The text, photographs and plans are for guidance only and are not necessarily comprehensive. It should not be assumed that the property has all the necessary planning, building regulation or other consents and Wetherell have not tested any services, equipment or facilities. Purchasers must satisfy themselves by inspection or otherwise. May 2010