

# Henry & James



**Parkside, SW1X**  
Furnished

**£3,950 per week**

A stunning 3/4 bedroom apartment located in one of Knightsbridge's most desirable mansion blocks with 24 hour portage and views over Hyde Park. The property was refurbished last year to a high standard including air-conditioning, and is stylishly decorated in neutral tones with wood flooring throughout. This spacious apartment of 2246 sq ft has excellent reception space overlooking the park, as well as an eat-in kitchen and a private balcony.

Two reception rooms, spacious reception hall, eat in kitchen, master bedroom with full en suite bathroom, two double bedrooms, two further full bathrooms, utility room, balcony, lift, porter.

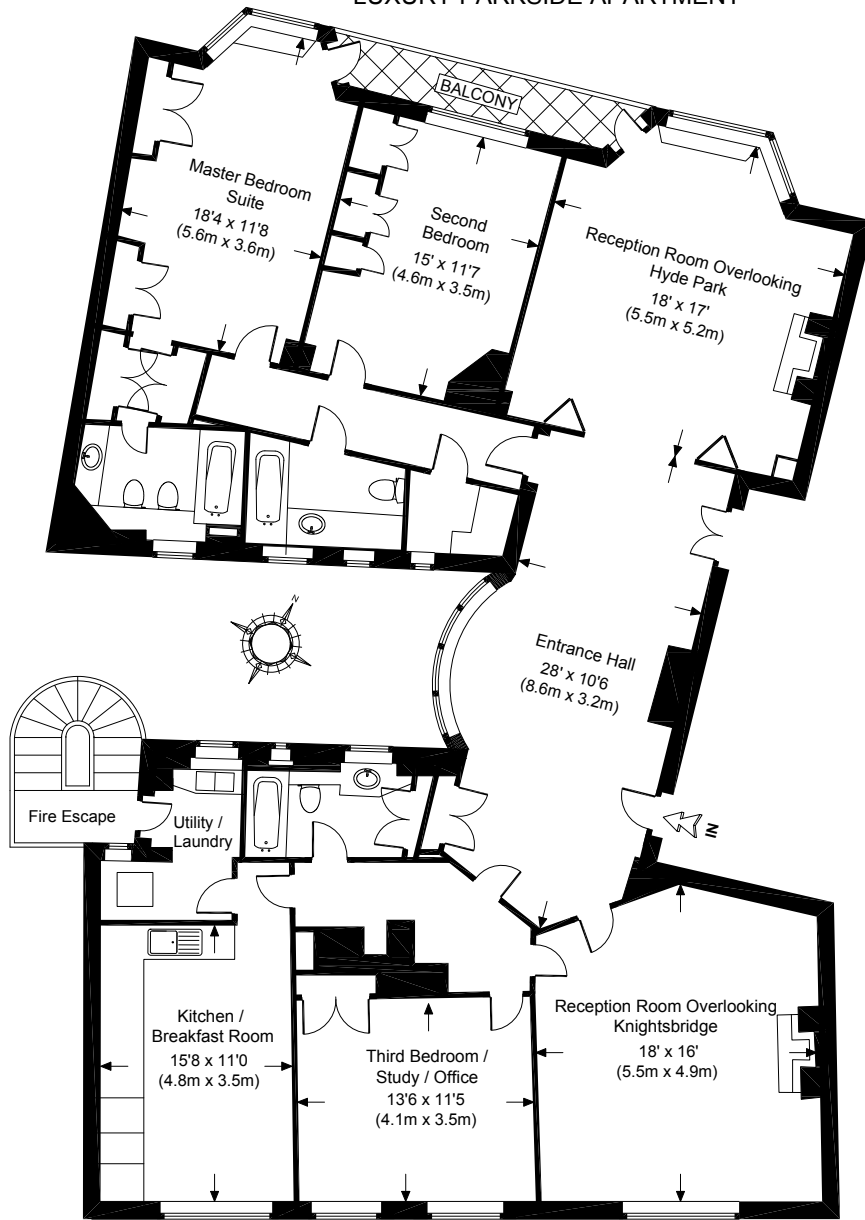
1 Motcomb Street, London, SW1X 8JX  
020 7235 8861



lettings@henryandjames.co.uk  
henryandjames.co.uk

# Henry & James

## LUXURY PARKSIDE APARTMENT



KNIGHTSBRIDGE, LONDON SW1

APPROXIMATE GROSS INTERNAL AREA = 2246.10 SQ.FT. (208.67 SQ. M.)

This plan is for layout guidance only. Not drawn to scale unless stated. Windows & door openings are approximate. Whilst every care is taken in the preparation of this plan, please check all dimensions, shapes & compass bearings before making any decisions reliant upon it.

1 Motcomb Street, London, SW1X 8JX  
020 7235 8861



lettings@henryandjames.co.uk  
henryandjames.co.uk