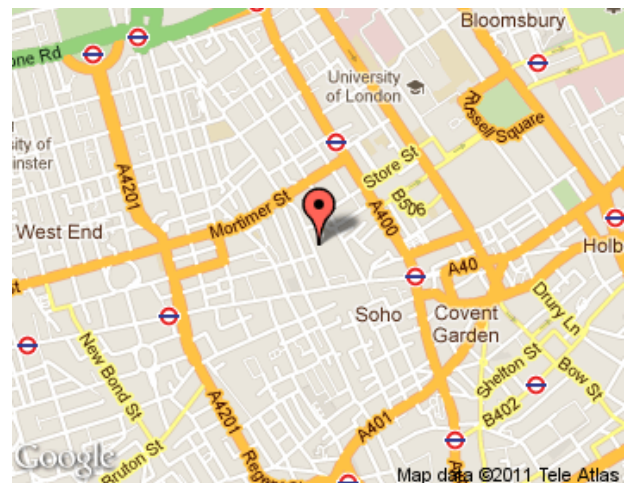


Newman Street, Fitzrovia, W1T
£550 per week, For long let



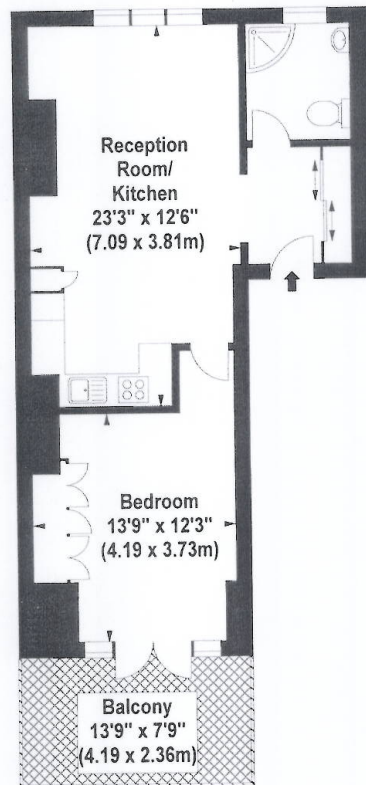
A unique one bedroom flat offering spacious bright living space and benefitting from access to a spacious private roof terrace. Located in the heart of Fitzrovia moments from Charlotte Street.





Newman Street, W1

Approx. Gross Internal Area *
548 Sq Ft - 50.87 Sq M



Second Floor

Illustration For Identification Purposes Only. Not To Scale
*Floorplan Drawn According To RICS Guidelines

Hudsons Property give notice to anyone reading these particulars that: (i) these particulars do not constitute part of an offer or contract; (ii) these particulars and any pictures or plans represent the opinion of the author and are given in good faith for guidance only and must not be construed as statements of fact; (iii) nothing in the particulars shall be deemed a statement that the property is in good condition otherwise; we have not carried out a structural survey of the property and have not tested the services, appliances or specified fittings.

Long Description

A unique one bedroom flat offering spacious bright living space and benefitting from access to a spacious private roof terrace. Located in the heart of Fitzrovia moments from Charlotte Street.