

SALTER REX

Chartered Surveyors & Estate Agents



**PARLIAMENT HILL,
LONDON, NW3**

£2.4M FREEHOLD

RECEPTION



PARLIAMENT HILL, NW3

A substantial freehold six bedroom red brick semi-detached period house of approximately 2667 sq ft, situated in a prime residential enclave, surrounded by Hampstead Heath.

In the same family ownership for over 50 years, the property retains an abundance of period detail, but requires modernisation and represents an excellent opportunity to create an outstanding family home. Six bedrooms, three receptions, two kitchens, two bathrooms, two w.c.s, cellar, 42' rear garden



BEDROOM

DINING AREA

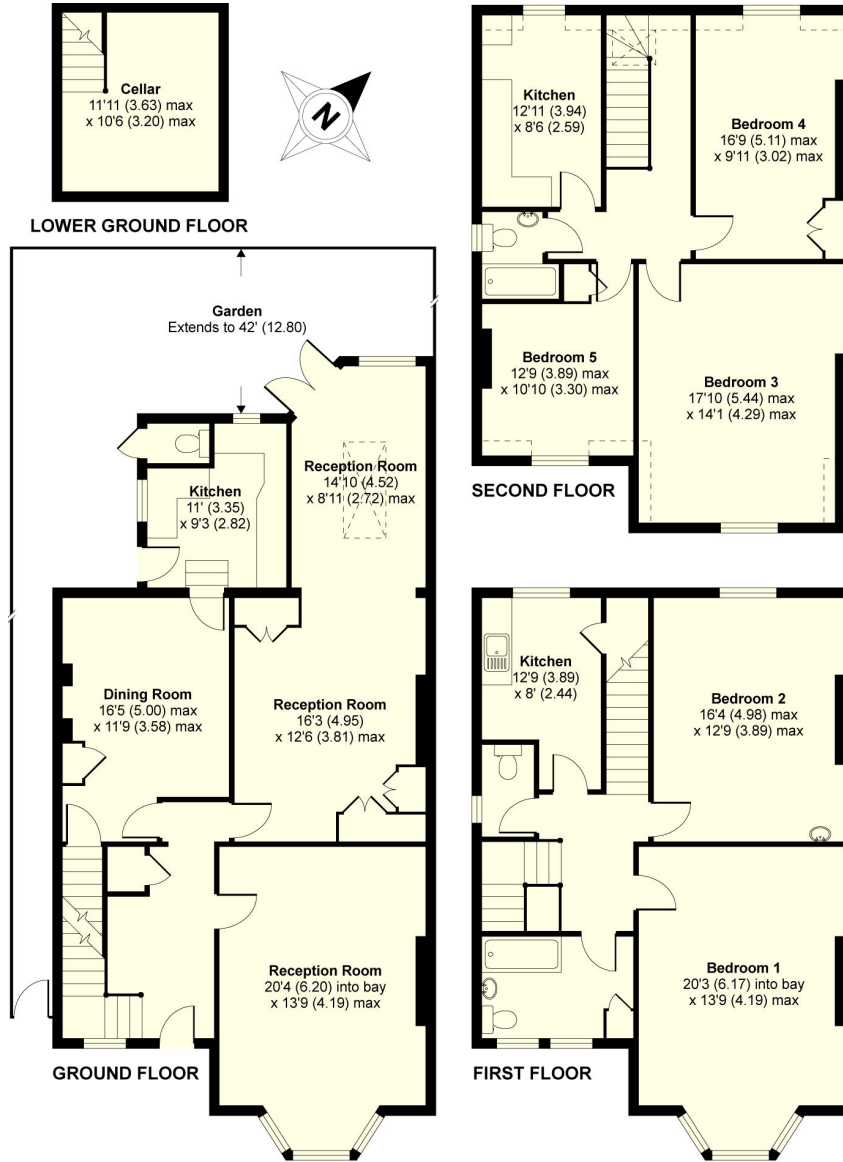


KITCHEN 1



BEDROOM 3

FLOOR PLAN

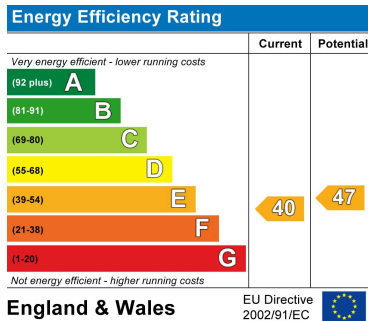


GROSS FLOOR AREA
INTERNAL 2667 SQFT 247.7 SQMETRES

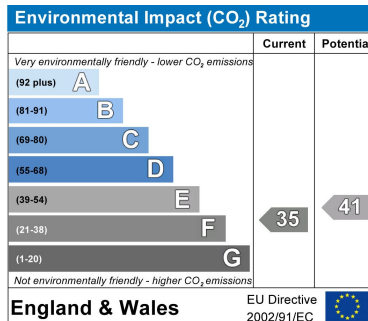
Parliament Hill, London, NW3

Whilst every attempt has been made to ensure the accuracy of the floor plans contained here, measurements of doors, windows and

ENERGY PERFORMANCE CHART



CONTACT DETAILS



SALTER REX
Chartered Surveyors & Estate Agents

SALTER REX KENTISH TOWN
CROWN HOUSE
265-267 KENTISH TOWN ROAD
LONDON
NW5 2TP

T 020 7482 4488 F 020 7485 8488

E: residential@salter-rex.co.uk

W: www.salter-rex.co.uk