

SHEPHERDS CLOSE

MAYFAIR W1



A freehold house (3,050 square feet)
in need of complete renovation & restoration,
in this exclusive gated enclave of just 3 houses

£4,750,000

SOLE AGENT



T: +44 (0) 20 7493 6935
E: mail@wetherell.co.uk
wetherell.co.uk
102 Mount Street · London · W1K 2TH





SHEPHERDS CLOSE

MAYFAIR W1

An unlisted neo-Georgian freehold townhouse dating from the early 1930's and now in need of complete renovation & restoration.

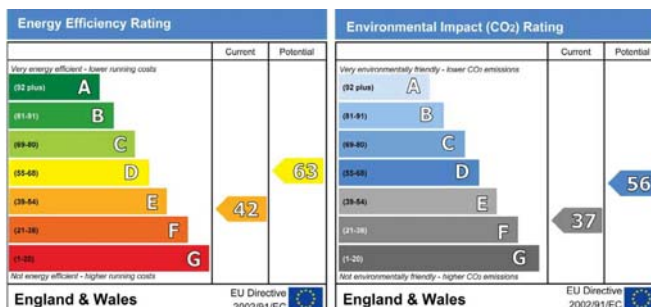
Accessed via a gated entrance on Lees Place, the house is approached across it's private 590 square foot paved garden, whilst the rear of the house faces Shepherd's Place.

The existing accommodation, arranged over only four floors, briefly comprises -

- * Entrance Hall
- * Three Reception Rooms
- * Kitchen / Breakfast room
- * Five Bedrooms
- * Four Bathrooms
- * Staff Bedroom & Bathroom
- * Guest Cloakroom
- * 3,050 Square Feet
- * Private Garden of 590 Square Feet

Tenure: Freehold

Price: £4,750,000

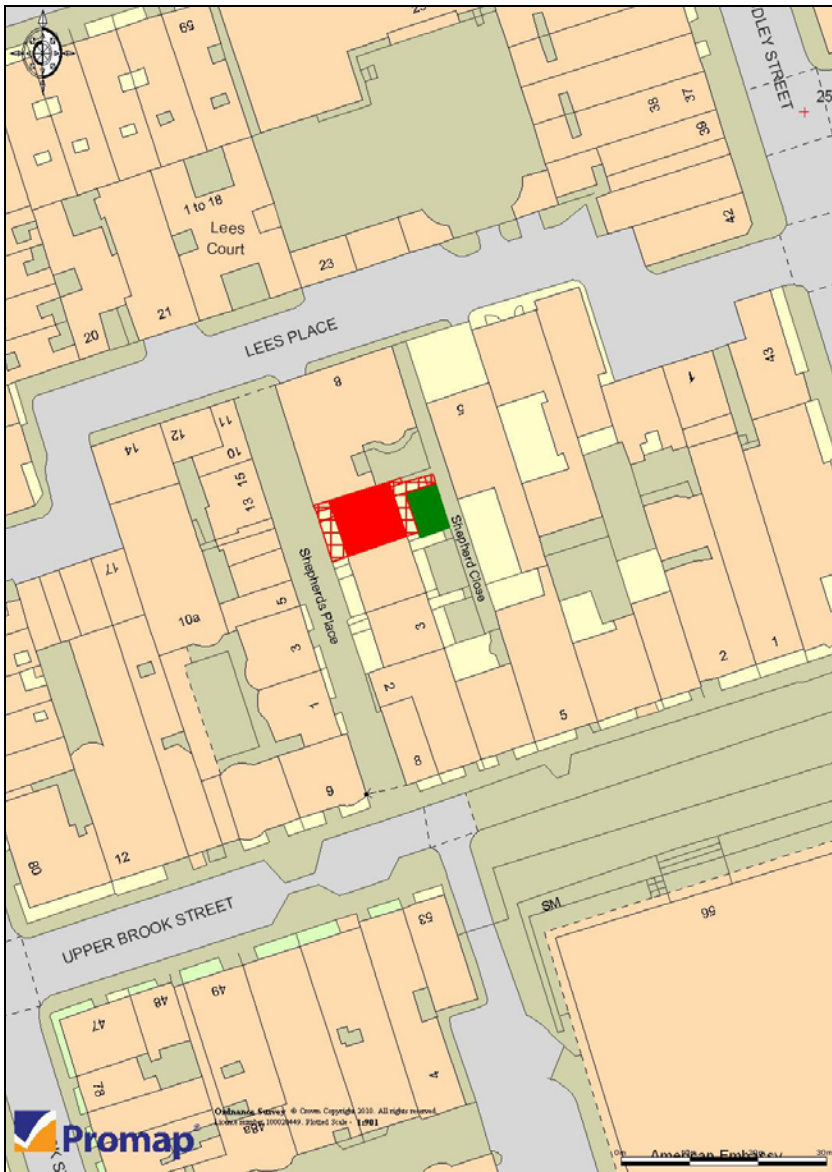


Wetherell & Co have no authority to make or give any representation or warranty whatever in relation to this property. These particulars do not form part of any offer or contract nor be relied upon as statements or representations of fact. All statements contained in these particulars as to this property are made without responsibility on the part of the agent. Any areas, measurements or distances, text, photographs and plans are for guidance only and are not necessarily comprehensive. It should not be assumed that the property has all the necessary planning, building regulation or other consents and Wetherell have not tested any services, equipment or facilities. Purchasers must satisfy themselves by inspection or otherwise. Details Prepared January 2010.

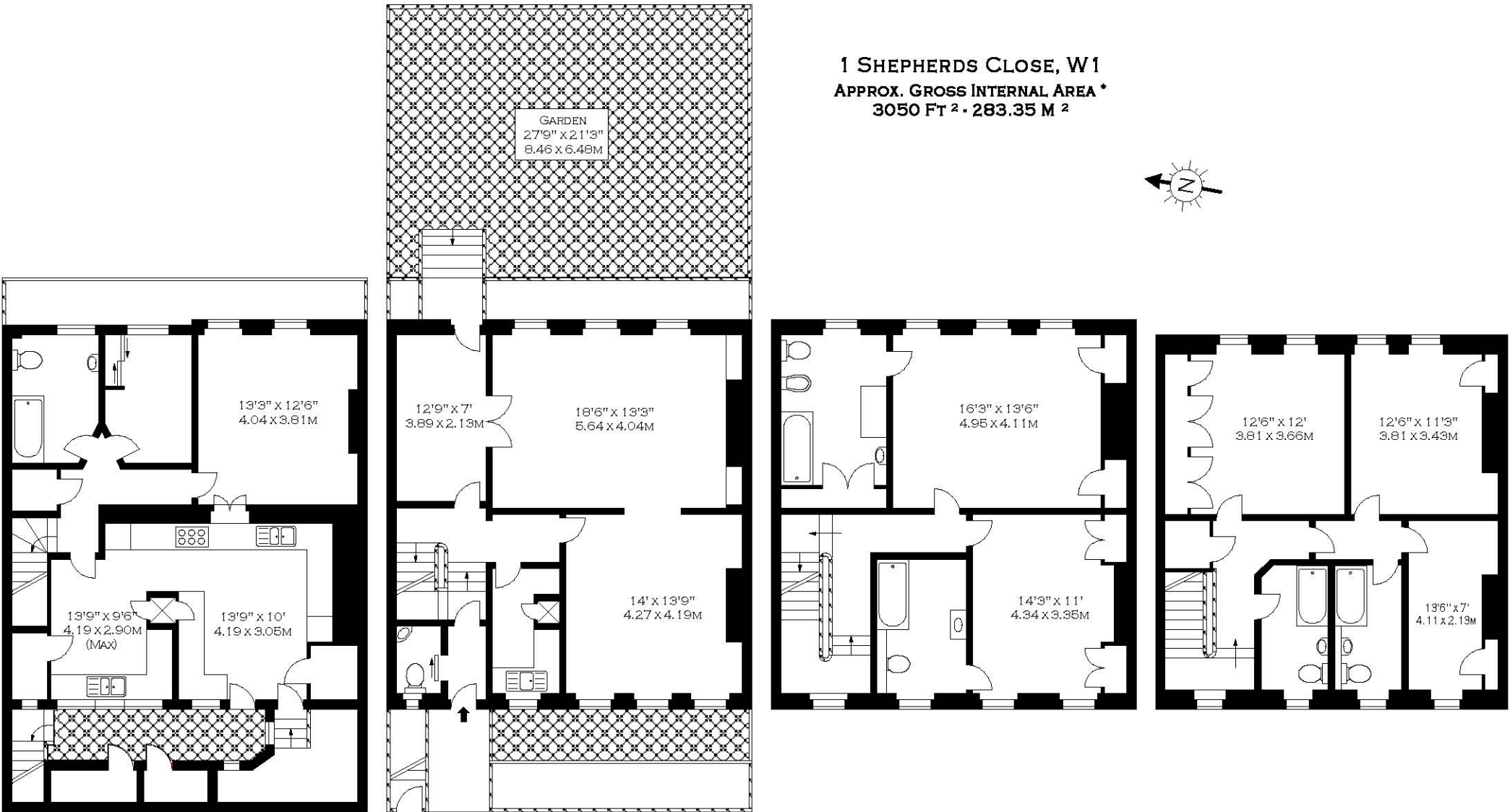
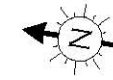


SHEPHERDS CLOSE

MAYFAIR W1



1 SHEPHERDS CLOSE, W1
APPROX. GROSS INTERNAL AREA *
3050 FT² · 283.35 M²



LOWER GROUND FLOOR

GROUND FLOOR

FIRST FLOOR

SECOND FLOOR

ILLUSTRATION FOR IDENTIFICATION PURPOSES ONLY. NOT TO SCALE

* AS DEFINED BY RICS - CODE OF MEASURING PRACTICE

© BERRIDGEKIRCHNER FLOORPLANS.

TEL 020 7787 5544