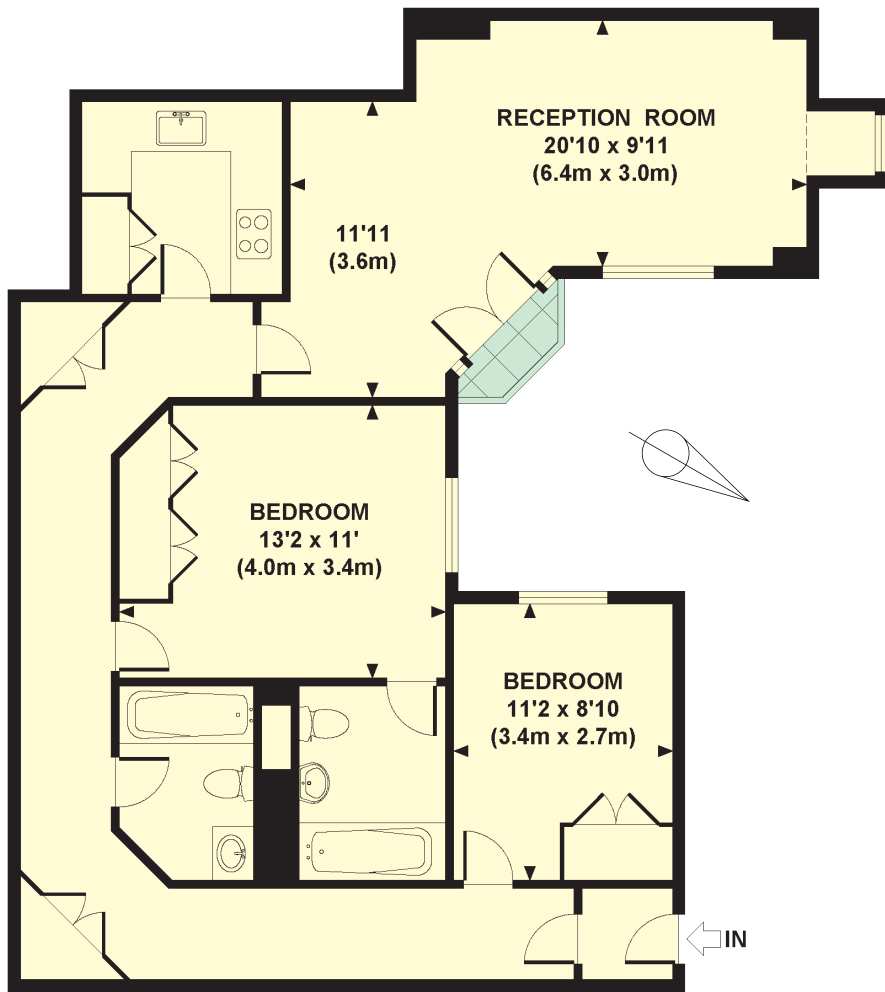




BOURDON STREET MAYFAIR W1

A fifth floor two bedroom flat (885 Sq Ft) in this modern Mayfair block quietly located at the end of this street behind Berkeley Square.



FIFTH FLOOR

Approximate Gross Internal Area
885 square feet (82 square metres)

Behind Berkeley Square and at the end of this quiet mews with a passageway to Bond Street, an outstanding value recently refurbished fifth floor two bedroom flat in this modern block built in the late 1980's around a gated courtyard.

Accommodation

- Entrance Hall
- Reception Room with Balcony
- Kitchen
- Two Bedrooms
- Two Bathrooms (One En Suite)
- Independent Central Heating & Hot Water
- Caretaker
- Lift
- 885 Sq Ft

Terms

Tenure: Leasehold, approximately 55 years unexpired
 Ground Rent: £1,550 per annum
 Service Charge: Approximately £6,720 per annum
 Price: £875,000



SOLE AGENT



WETHERELL
 MAYFAIR'S FINEST PROPERTIES
 102 Mount Street · London · W1K 2TH
020 7529 5566
 wetherell.co.uk