

SALTER REX

Chartered Surveyors & Estate Agents



CAVERSHAM ROAD, NW5

£765,000 LEASEHOLD

RECEPTION



CAVERSHAM ROAD, NW5

A truly outstanding three bedroom garden maisonette, arranged over the raised ground and garden levels of a substantial four storey period house, in a prime residential location, within easy reach of Kentish Town Underground. Within a very short distance are good schools, the nearest being Camden School for Girls

The property has been subject to a thorough and meticulous refurbishment to the highest standard, using the best possible materials including parquet floors throughout, solid oak joinery, granite worktops and double glazed sliding sashes.

The lower ground floor had been arranged to the optimum layout and features a vast master bedroom with ensuite, two further bedrooms and a family bathroom.

The rear garden, in excess of 80' has side access with the potential for off street parking or garage, subject to planning.



BEDROOM

Salter Rex Residential Estate Agents for themselves and for the Vendors or Lessors of this property whose Agents they are, give notice that:-

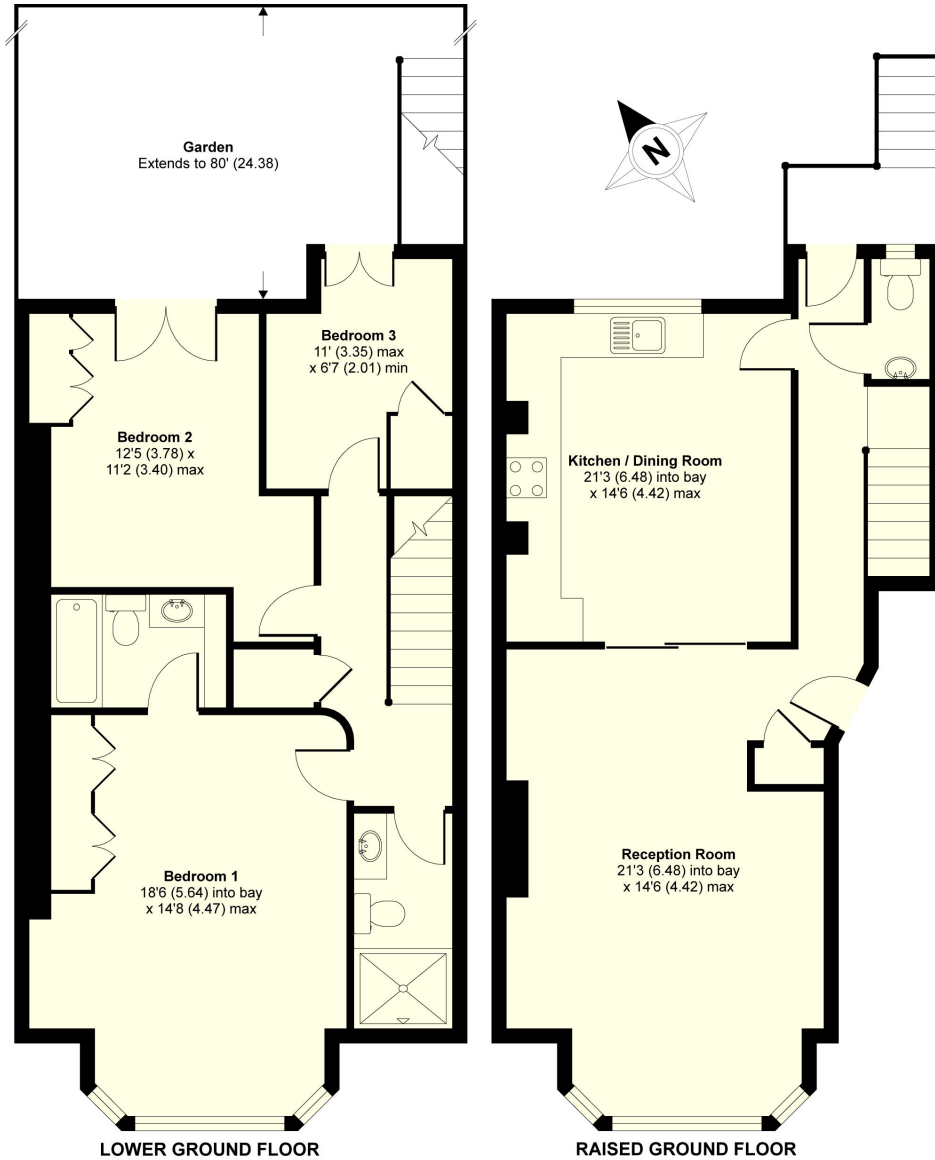
1. These particulars do not constitute, nor constitute any part of, an offer or contract. Statements contained in these particulars as to this property are made without responsibility on the part of Salter Rex, the Vendors or Lessors. None of the statements contained in these particulars as to this property are to be relied upon as statements or representation of fact. All dimensions given are approximate only.
2. Any intending purchasers must satisfy themselves by inspection or otherwise as to the correctness of each of the statements contained in these particulars. The Vendor or Lessor does not make or give and neither Salter Rex Residential nor any person in their employment has any authority to make or give any representation or warranty whatsoever in relation to this property.

KITCHEN



BATHROOM

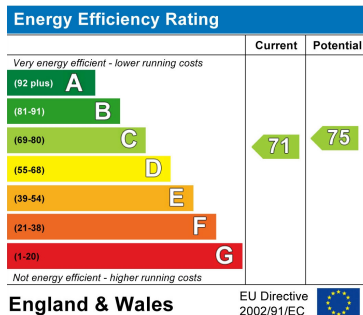
FLOOR PLAN



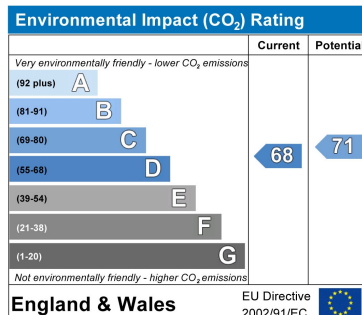
GROSS FLOOR AREA
INTERNAL 1283 SQFT 119.2 SQMETRES

Lower Masionette Caversham Road NW5

ENERGY PERFORMANCE CHART



CONTACT DETAILS



SALTER REX
Chartered Surveyors & Estate Agents

SALTER REX KENTISH TOWN
CROWN HOUSE
265-267 KENTISH TOWN ROAD
LONDON
NW5 2TP
T 020 7482 4488 F 020 7485 8488
E: residential@salter-rex.co.uk
W: www.salter-rex.co.uk