

A fine, late C19th south-facing family house
of some 6,000 square feet just off Park Lane



GREEN STREET
Mayfair W1



GREEN STREET

Mayfair W1

A fine late C19th family house just off Park Lane, fully refurbished & reinstated as a private family home about 10 years ago and retaining many period features.

The marble chequered floor in the entrance hall sets off the grand staircase, surmounted by a glass atrium, whilst the passenger lift which serves all floors is discretely hidden behind a mahogany panelled door.

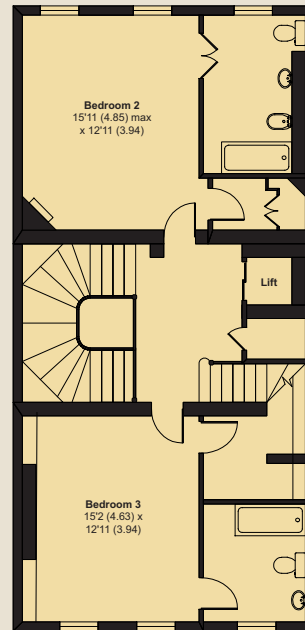
Outside space is provided by a terrace from the ground floor dining room and a patio garden from the family/breakfast room adjacent to the kitchen.



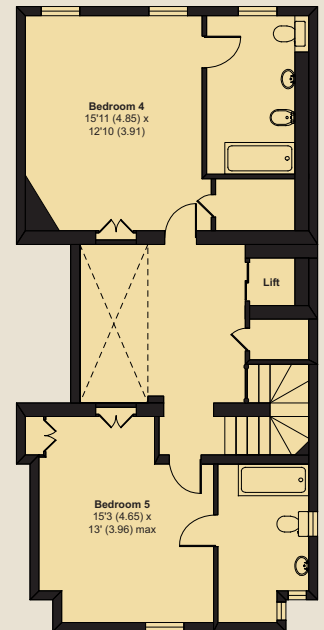




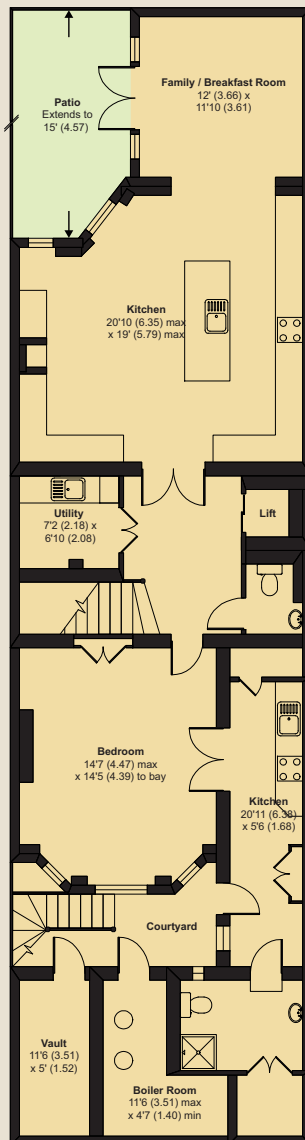
Second Floor



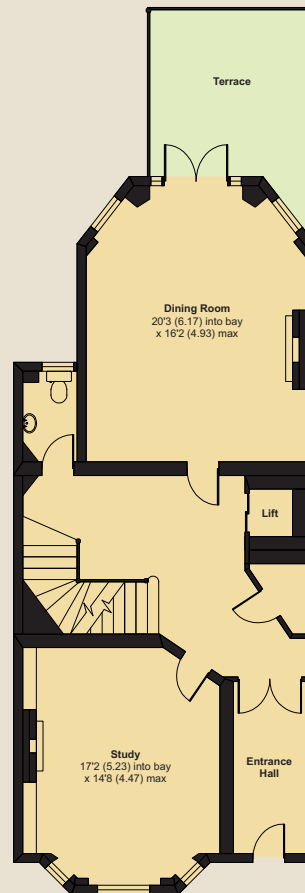
Third Floor



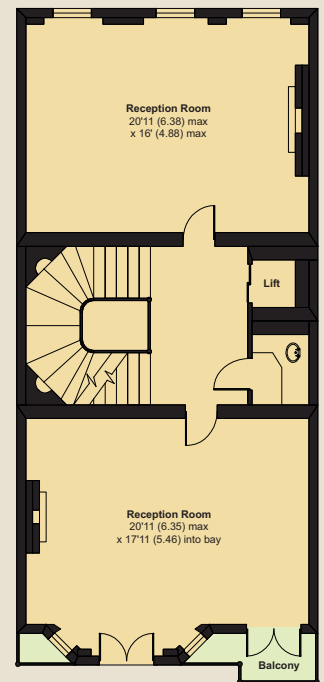
Fourth Floor



Lower Ground Floor



Ground Floor

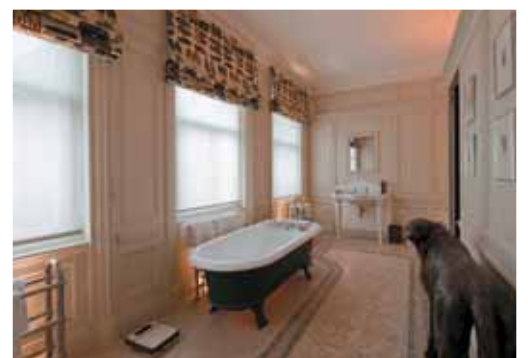


First Floor

- Entrance Hall
- Four Reception Rooms
- Kitchen/Family Room
- Five Bedrooms with En Suite Bathrooms
- Self Contained Staff Suite of Bedroom, Bathroom & Kitchen
- Passenger Lift to all Floors
- Terrace and Patio



5,947 Square Feet (552.4 Square Metres)
Approx GIA





Lease 87 years unexpired
 Ground Rent Peppercorn
 £11,000,000

Sole Agent


WETHERELL
 MAYFAIR'S FINEST PROPERTIES
 102 Mount Street · London · W1K 2TH
020 7529 5566
 wetherell.co.uk



Wetherell have no authority to make or give any representations or warranties in relation to the property. These particulars do not form part of any offer or contract and must not be relied upon as statements or representations of fact. Any areas, measurements or distances are approximate. The text, photographs and plans are for guidance only and are not necessarily comprehensive. It should not be assumed that the property has all the necessary planning, building regulation or other consents and Wetherell have not tested any services, equipment or facilities. Purchasers must satisfy themselves by inspection or otherwise. February 2010