

SALTER REX

HAMPSTEAD



**SOUTH HILL PARK GARDENS,
NW3 2SN**

£575,000 SHARE OF FREEHOLD

LOUNGE



SOUTH HILL PARK GARDENS, NW3 2SN

A charming two bedroomed, 1st floor flat in this attractive Victorian period house, set within the conservation area of Hampstead.

Offering two bedrooms, ample storage, a well-appointed bathroom, and a stunning 21' reception with ceiling to floor bay windows.

Views overlooking the Heath and Pond, large communal garden and located within a short walk of South End Green shops and transport links.

Share of freehold.



BEDROOM

Salter Rex Residential Estate Agents for themselves and for the Vendors or Lessors of this property whose Agents they are, give notice that:-

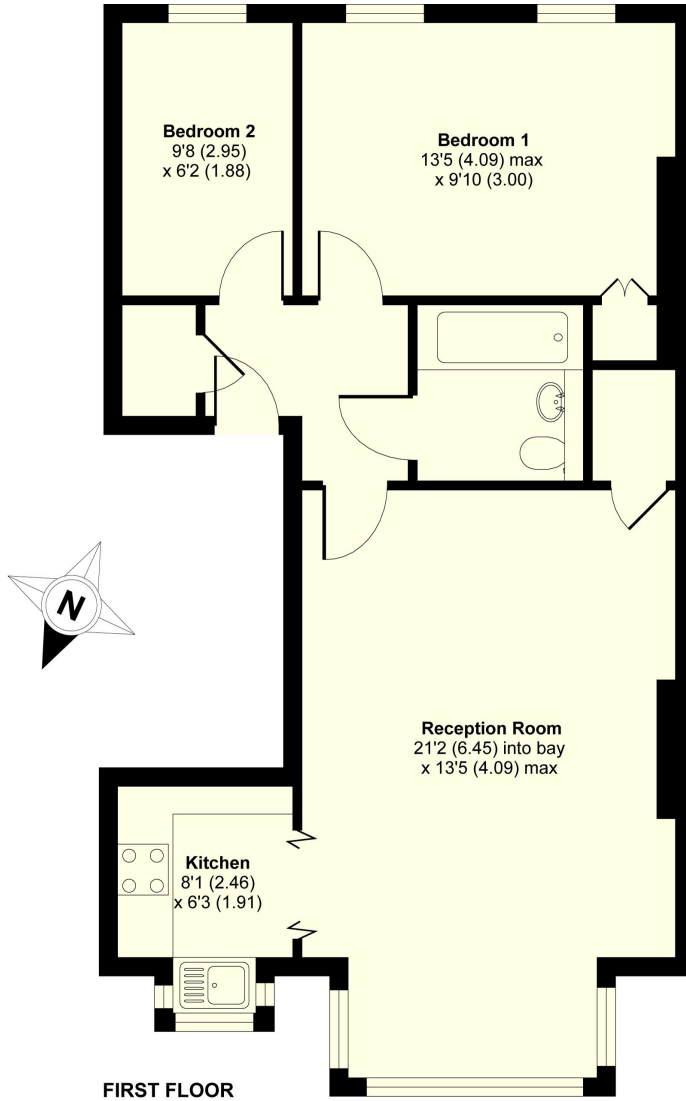
1. These particulars do not constitute, nor constitute any part of, an offer or contract. Statements contained in these particulars as to this property are made without responsibility on the part of Salter Rex, the Vendors or Lessors. None of the statements contained in these particulars as to this property are to be relied upon as statements or representation of fact. All dimensions given are approximate only.
2. Any intending purchasers must satisfy themselves by inspection or otherwise as to the correctness of each of the statements contained in these particulars. The Vendor or Lessor does not make or give and neither Salter Rex Residential nor any person in their employment has any authority to make or give any representation or warranty whatsoever in relation to this property.

KITCHEN



BATHROOM

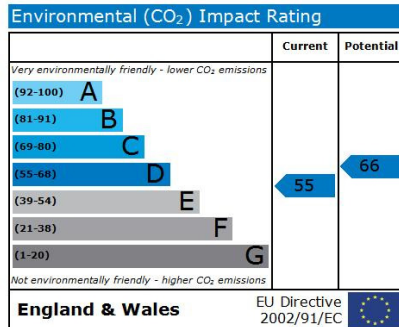
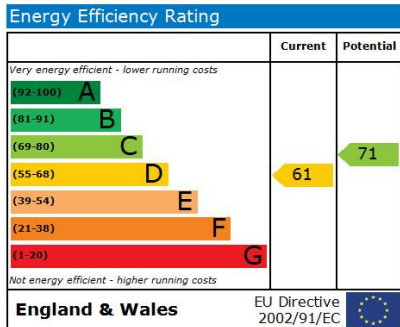
FLOOR PLAN



GROSS FLOOR AREA
INTERNAL 632 SQFT 58.7 SQMETRES

South Hill Park Gardens, London NW3

ENERGY PERFORMANCE CHART



CONTACT DETAILS

SALTER REX
HAMPSTEAD

47 SOUTH END ROAD
HAMPSTEAD
LONDON
NW3 2TP

T 020 7431 1881 F 020 7431 4321
E: hampstead@salter-rex.co.uk
W: www.salter-rex.co.uk