



HEREFORD HOUSE

NORTH ROW | LONDON W1

# FAMILY SIZED CHIC

A newly refurbished four bedroom flat on the 5th floor of this portered block. With a Westerly aspect it is bright, spacious and has a contemporary feel. The open hallway separating the two reception rooms make it ideal for entertaining.

With air cooling and audio visual equipment throughout the apartment is set up for 21st century living. There is a separate dining room as well as an eat in kitchen which allow for both formal and informal entertaining.

The interior design is modern and elegant but also incorporates traditional features giving it a sophisticated ambiance and feel.





## ACCOMMODATION & AMENITIES

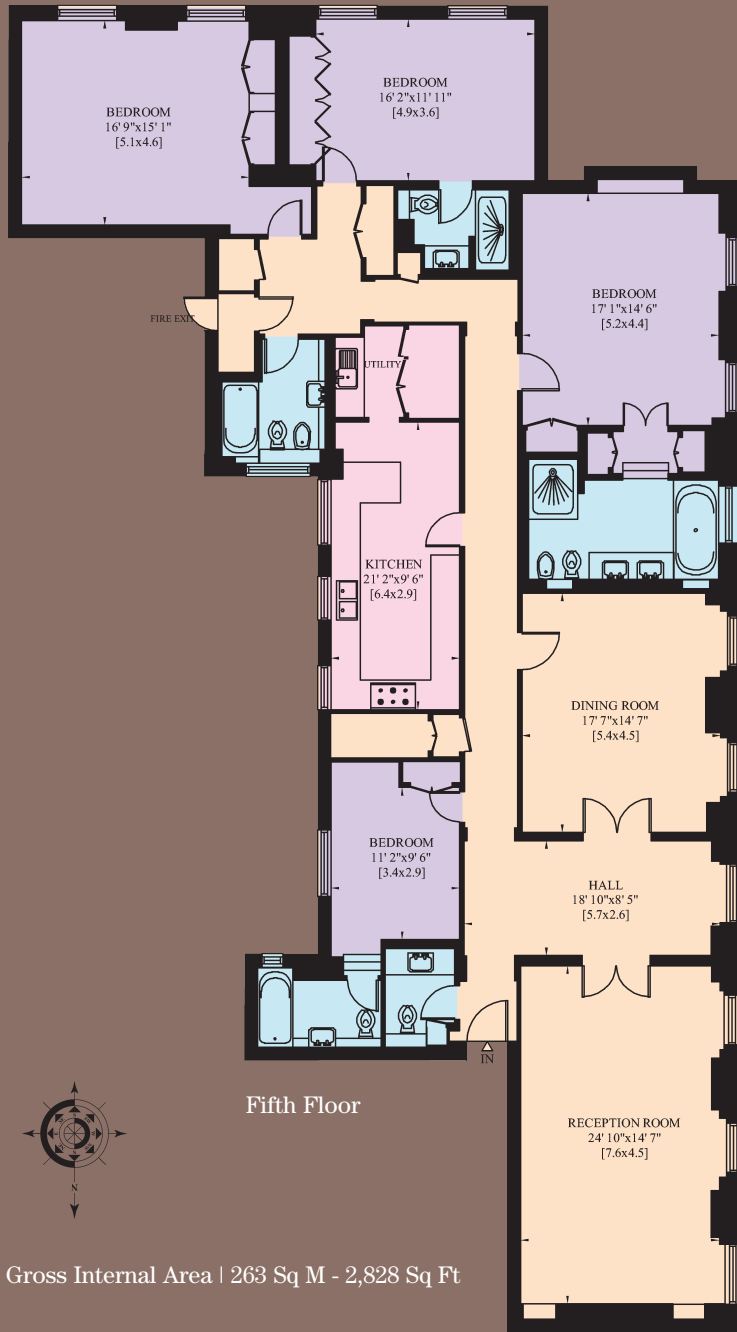
Master Bedroom Suite • 2 Further Bedroom Suites  
Guest Bedroom • Guest Bathroom • Reception Room  
Dining Room • Kitchen/Breakfast Room • Cloakroom  
Steam Room • Utility Room • Lift • Porter  
263sq.m (2,828sq.ft)



## TERMS

Tenure: Leasehold 77 years

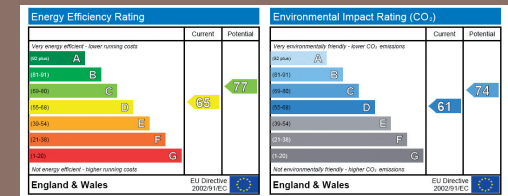
Price: £5,950,000




Mayfair  
020 7499 1012  
KnightFrank.co.uk



WETHERELL  
102 Mount Street, London W1K 2TH  
020 7493 6935  
www.wetherell.co.uk



These plans are for guidance only and must not be relied upon as a statement of fact. Attention is drawn to the Important Notice.

**IMPORTANT NOTICE**

1. Particulars: These particulars are not an offer or contract, nor part of one. You should not rely on statements by Knight Frank LLP in the particulars or by word of mouth or in writing ("information") as being factually accurate about the property, its condition or its value. Neither Knight Frank LLP nor any joint agent has any authority to make any representations about the property, and accordingly any information given is entirely without responsibility on the part of the agents, seller(s) or lessor(s). 2. Photos etc: The photographs show only certain parts of the property as they appeared at the time they were taken. Areas, measurements and distances given are approximate only. 3. Regulations etc: Any reference to alterations to, or use of, any part of the property does not mean that any necessary planning, building regulations or other consent has been obtained. A buyer or lessee must find out by inspection or in other ways that these matters have been properly dealt with and that all information is correct. 4. VAT: The VAT position relating to the property may change without notice. Particulars dated: November 2009. Photographs dated: November 2009.

Knight Frank LLP is a limited liability partnership registered in England with registered number OC305934. Our registered office is 55 Baker Street, London, W1U 8AN, where you may look at a list of members' names.

Gross Internal Area | 263 Sq M - 2,828 Sq Ft