



A LUXURIOUS AND INDULGENT PENTHOUSE



GROSVENOR HILL COURT BOURDON STREET MAYFAIR W1

A LUXURIOUS AND INDULGENT PENTHOUSE

GROSVENOR HILL COURT BOURDON STREET MAYFAIR WI



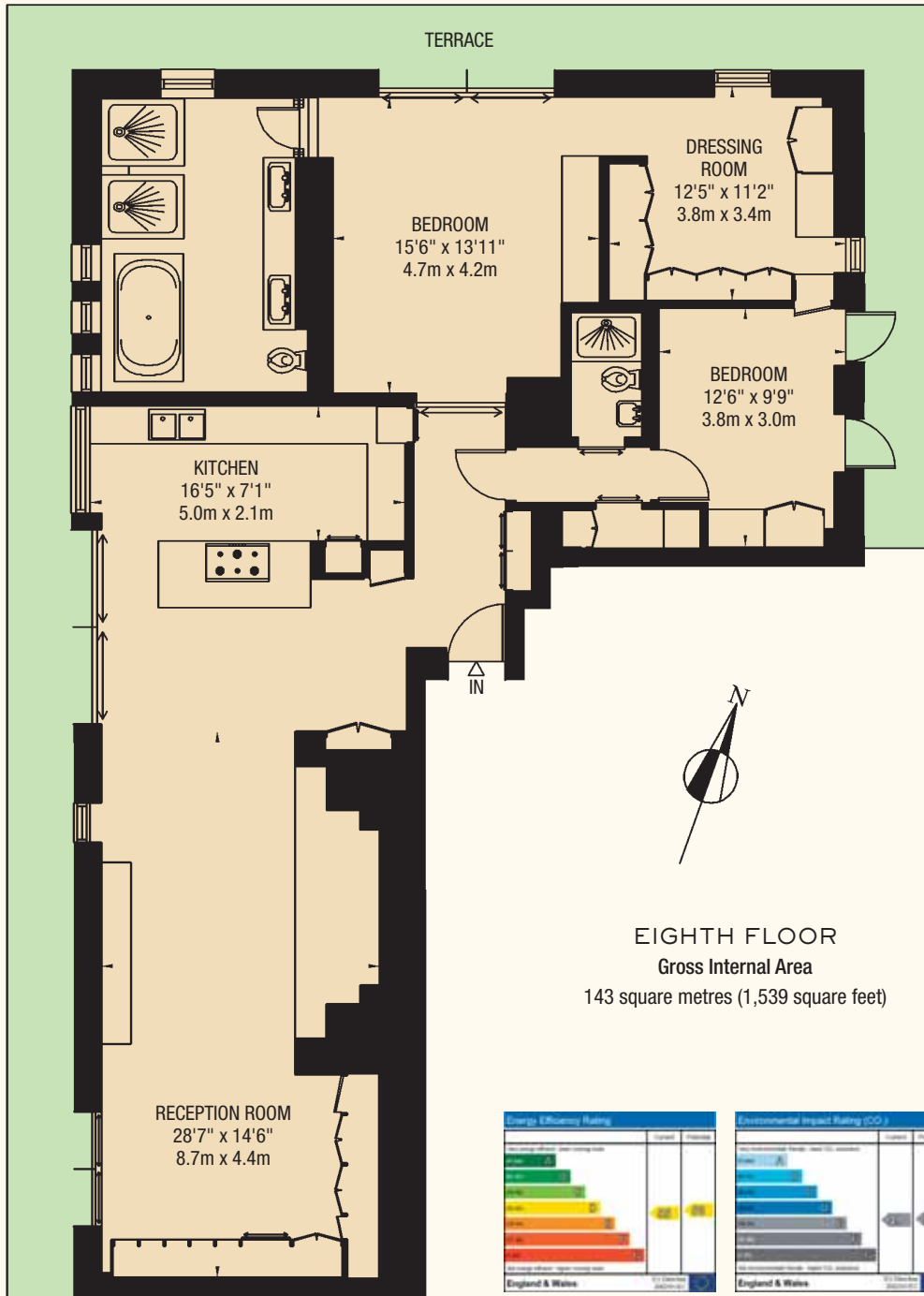
A stylish and contemporary eighth floor penthouse in this quietly located modern apartment building just to the north of Berkeley Square. The smart entrance lobby is manned day & evening by a porter.



Refurbished by the current owner, the apartment, which was originally 3 bedrooms, has been remodelled to create a luxurious and indulgent 2 bedroom penthouse with a terrace accessible from the reception room and both bedrooms.



- Entrance Hall
- Reception Room
- Kitchen
- Master Bedroom with En Suite Bathroom & En Suite Dressing Room
- Guest Bedroom with En Suite Shower Room
- Wrap-around Terrace to 3 sides of Apartment
- 1,539 Square Feet
- Air Cooling/Heating
- Sophisticated Multi Room AV System
- Lutron Controlled Lighting
- Resident Porter
- 2 Passenger Lifts



Tenure Leasehold, approximately 92 years unexpired
Ground Rent Peppercorn
Service Charge Approximately £13,850 per annum
Price £3,000,000


WETHERELL
 MAYFAIR'S FINEST PROPERTIES
 102 Mount Street · London · W1K 2TH
 020 7529 5566
 wetherell.co.uk


 Mayfair
 020 7499 1012
 KnightFrank.co.uk

Wetherell and Knight Frank have no authority to make or give any representations or warranties in relation to the property. These particulars do not form part of any offer or contract and must not be relied upon as statements or representations of fact. Any areas, measurements or distances are approximate. The text, photographs and plans are for guidance only and are not necessarily comprehensive. It should not be assumed that the property has all the necessary planning, building regulation or other consents and Wetherell have not tested any services, equipment or facilities. Purchasers must satisfy themselves by inspection or otherwise. January 2010