



## WOODSTOCK STREET, W1

A well presented, contemporary styled two bedroom apartment (669 sq ft) on the first floor of this modern block. Ideally located within walking distance to Bond Street tube station and the shopping mecca of Selfridges.

**£650 per week**  
**Furnished**



T: +44 (0) 20 7493 6935  
E: [mail@wetherell.co.uk](mailto:mail@wetherell.co.uk)  
[wetherell.co.uk](http://wetherell.co.uk)  
102 Mount Street · London · W1K 2TH



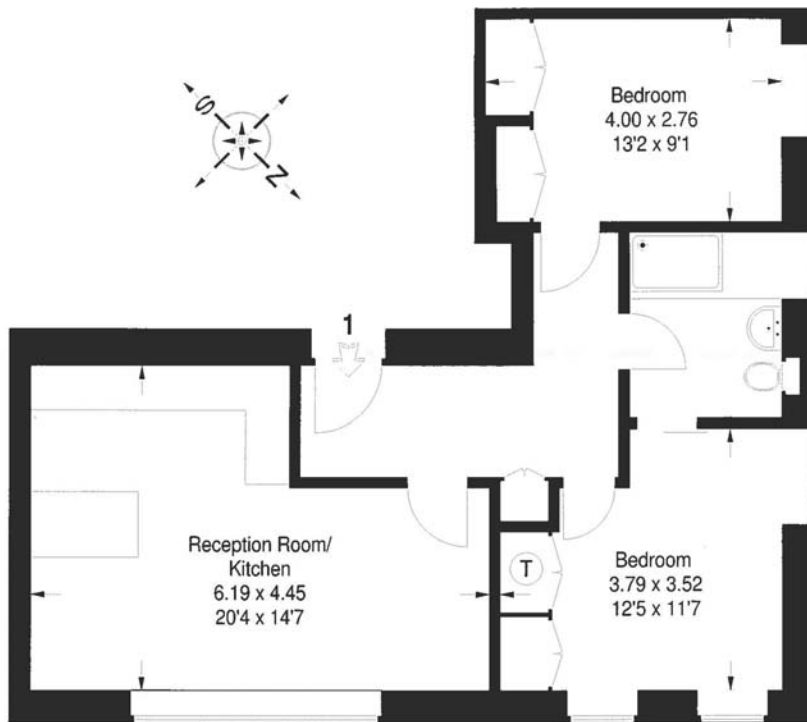


# Woodstock Street, W1

- \* Open plan Reception Room / Kitchen
- \* Two Double Bedrooms
- \* Bathroom
- \* Lift

Flat 1,  
16 Woodstock Street, WC12

Approximate Gross Internal Area :-  
62 sq m / 669 sq ft



## First Floor

FLOORPLANZ © 2008  
01483 755510 Ref 47883

This illustration is for identification purposes only. Measured & drawn in accordance with RICS guidelines. Not drawn to scale, unless stated. Dimensions shown are to the nearest 7.5 cm / 3" and are through cupboard / wardrobes to wall surfaces where possible or where indicated by arrow heads. Whilst every care is taken in the preparation of this plan, please check all dimensions shapes & compass bearings before making any decisions reliant upon them.

