

# GEORGE TROLLOPE

Gerald Road, Belgravia, SW1W  
£7,950,000, Freehold



A wonderful stucco fronted house set back from the road behind iron gates on the favoured south side of one of the finest streets in Belgravia. The house which has recently been refurbished to a high standard offers flexible accommodation and includes two very spacious reception rooms, master bedroom suite and five further bedrooms. Gerald Road is a one way street and runs between Elizabeth Street and South Eaton Place. The shops and restaurants of Sloane Square and the King's Road are a short walk away as is Victoria mainline station

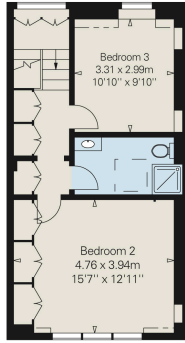




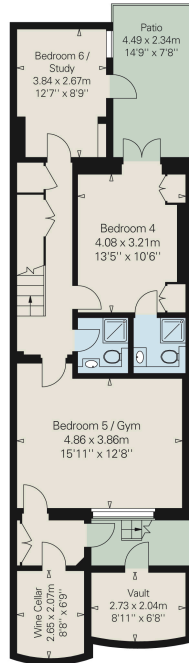
Approximate Gross Internal Area  
3,154 sq ft / 293 sq m  
including vault



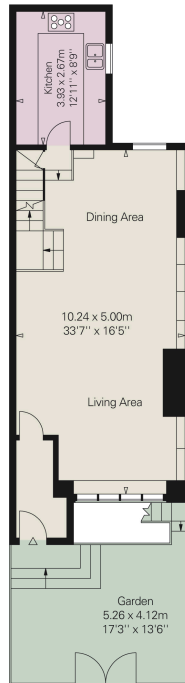
SECOND FLOOR



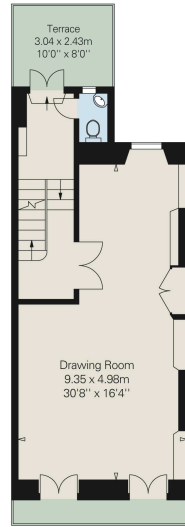
THIRD FLOOR



LOWER GROUND FLOOR



GROUND FLOOR



FIRST FLOOR

George Trollope give notice to anyone reading these particulars that: (i) these particulars do not constitute part of an offer or contract; (ii) these particulars and any pictures or plans represent the opinion of the author and are given in good faith for guidance only and must not be construed as statements of fact; (iii) nothing in the particulars shall be deemed a statement that the property is in good condition otherwise; we have not carried out a structural survey of the property and have not tested the services, appliances or specified fittings.

## Long Description

A wonderful stucco fronted house set back from the road behind iron gates on the favoured south side of one of the finest streets in Belgravia. The house which has recently been refurbished to a high standard offers flexible accommodation and includes two very spacious reception rooms, master bedroom suite and five further bedrooms. Gerald Road is a one way street and runs between Elizabeth Street and South Eaton Place. The shops and restaurants of Sloane Square and the King's Road are a short walk away as is Victoria mainline station.

Reception Room/Dining Room: Kitchen: First Floor Drawing Room: Master Bedroom with En-Suite Bathroom: 3 Further Double Bedrooms: 3 Shower Rooms: Bedroom 5/Gym: Bedroom 6/Study: Wine Cellar: Storage Vault: Front Garden: Patio: Roof Terrace: Part Air-Conditioned