

# SALTER REX

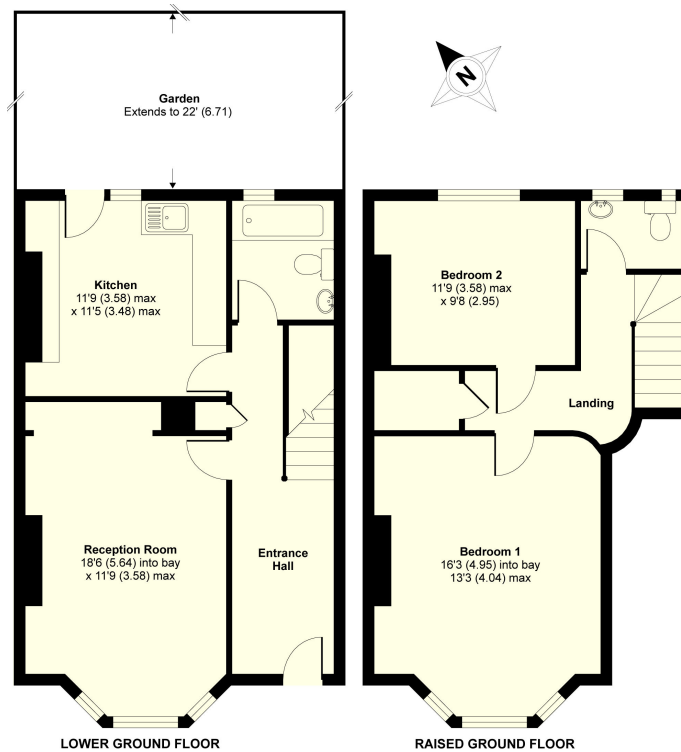
Chartered Surveyors & Estate Agents



**HIGHGATE ROAD, NW5 1NU**

**£425,000 LEASEHOLD**

## FLOOR PLAN



GROSS FLOOR AREA  
INTERNAL 973 SQFT 90.3 SQMETRES

### 48a Highgate Road NW5

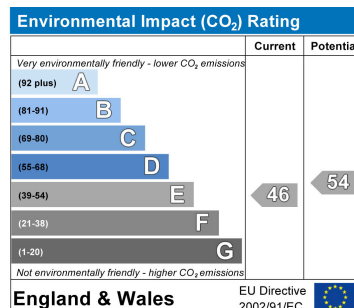
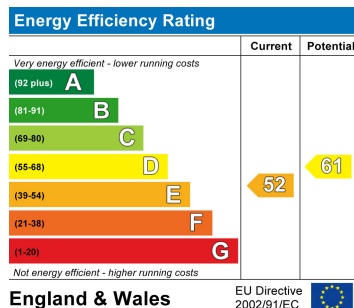
Whilst every attempt has been made to ensure the accuracy of the floor plans contained here, measurements of doors, windows and rooms are approximate and no responsibility is taken for any error, omission or mis-statement. These plans are for representation purposes only as defined by RICS Code of Measuring Practice and should be used as such by any prospective purchaser. The services, systems and appliances listed in this specification have not been tested by Salter Rex and no guarantee as to their operating ability or their efficiency can be given.

Copyright nichecom.co.uk 2007 Produced for Salter Rex REF : 07-38779

## HIGHGATE ROAD, NW5 1NU

A great two bedroom apartment converted from the raised and lower ground floors of a substantial four storey period house. The property benefits from sash windows, spacious kitchen, guest WC and sole use of the delightful rear garden. Highgate Road is situated within easy reach of the shopping and transport facilities of Kentish Town as well being within striking distance of Hampstead Heath.

## ENERGY PERFORMANCE CHART



## CONTACT DETAILS

**SALTER REX**  
Chartered Surveyors & Estate Agents

SALTER REX KENTISH TOWN  
CROWN HOUSE  
265-267 KENTISH TOWN ROAD  
LONDON  
NW5 2TP

T 020 7482 4488 F 020 7485 8488

E: [residential@salter-rex.co.uk](mailto:residential@salter-rex.co.uk)

W: [www.salter-rex.co.uk](http://www.salter-rex.co.uk)