

## GREEN STREET

MAYFAIR W1



A fully refurbished apartment of approximately 1,116 Sq. Ft on the first floor of this period building.

£1,950,000  
Main Agents



T: +44 (0) 20 7493 6935  
E: [mail@wetherell.co.uk](mailto:mail@wetherell.co.uk)  
[wetherell.co.uk](http://wetherell.co.uk)  
102 Mount Street · London · W1K 2TH





# GREEN STREET

MAYFAIR W1

A lateral apartment (1116 square foot) on the 1<sup>st</sup> floor of this period building with an attractive reception room with French doors leading to a small rear terrace.

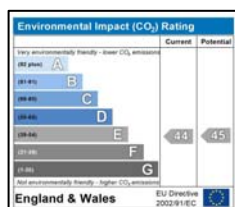
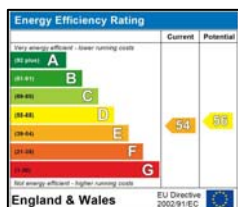
- \* Entrance Hall
- \* Reception Room with French doors to a terrace
- \* Kitchen / Breakfast Room with French doors to a terrace
- \* Master Bedroom with En Suite Shower Room
- \* Second Bedroom with En Suite Bathroom
- \* Guest Cloakroom
- \* Terrace
- \* Lift

Tenure: Leasehold, approximately 121 years unexpired

Ground Rent: Approximately £125 per annum

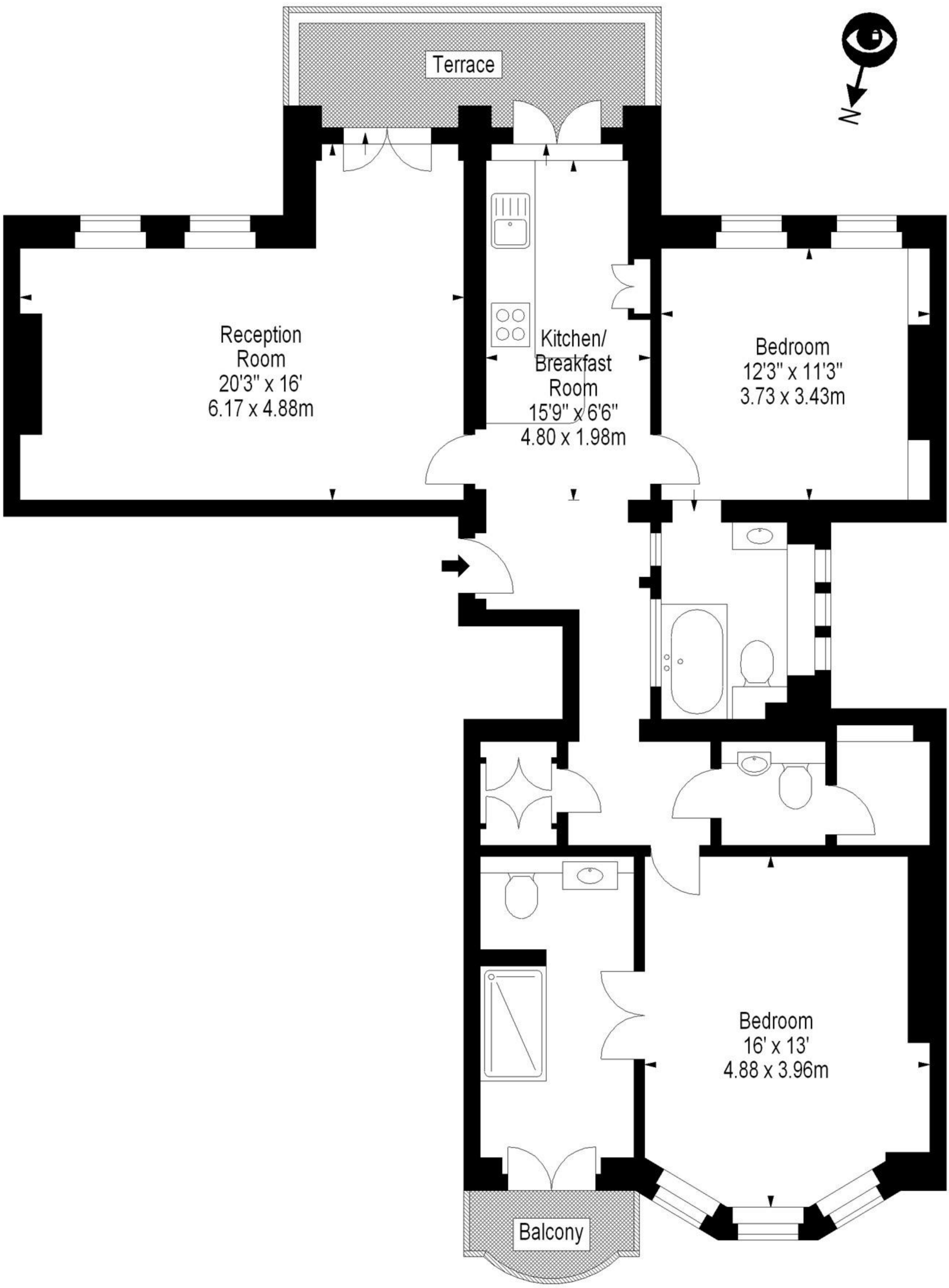
Service Charge: Approximately £4,461 per annum

**Price: £1,950,000**



Wetherell & Co have no authority to make or give any representation or warranty whatever in relation to this property. These particulars do not form part of any offer or contract nor be relied upon as statements or representations of fact. All statements contained in these particulars as to this property are made without responsibility on the part of the agent. Any areas, measurements or distances, text, photographs and plans are for guidance only and are not necessarily comprehensive. It should not be assumed that the property has all the necessary planning, building regulation or other consents and Wetherell have not tested any services, equipment or facilities. Purchasers must satisfy themselves by inspection or otherwise. Details Prepared June 2009.





First Floor

Approx Gross Internal Area **1116 Sq Ft - 103.38 Sq M**