

UPPER GROSVENOR STREET

MAYFAIR W1



Newly Refurbished and Interior Designed Duplex of
3337 Square Feet.

£7,650,000 / £7,500 per week



T: +44 (0) 20 7493 6935
E: mail@wetherell.co.uk
wetherell.co.uk
102 Mount Street · London · W1K 2TH



Wetherell & Co. (Mayfair) Ltd · Registered in England & Wales Number 2651793



UPPER GROSVENOR STREET

MAYFAIR W1

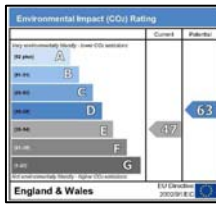
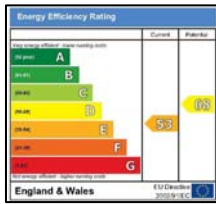
A 3,337 square foot duplex apartment in this beautiful building in the heart of Mayfair. This stylish and contemporary duplex apartment has been fully refurbished and interior designed to the highest specifications. At the favored west end of Upper Grosvenor Street, the apartment, benefits from, double reception room opening onto a private terrace, separate dining room, a stunning kitchen and three bedroom suites.

- * Entrance Hall
- * Double Reception Room
- * Dining Room
- * Tsunami Kitchen with separate utility room
- * Master Bedroom Suite & Dressing area
- * Two Further Bedrooms Suites
- * Two Private Terraces
- * Lift with direct access
- * Vantage control system
- * iLight lighting control system
- * CCTV with digital recorder
- * Intruder alarm system
- * Panasonic PBX telephone system
- * Kaleidescape Movie and Music server system
- * Wifi network and Sky HD
- * Meridian Home Cinema
- * High Definition Plasmas and LCDs
- * Approximately 3337 Sq Ft



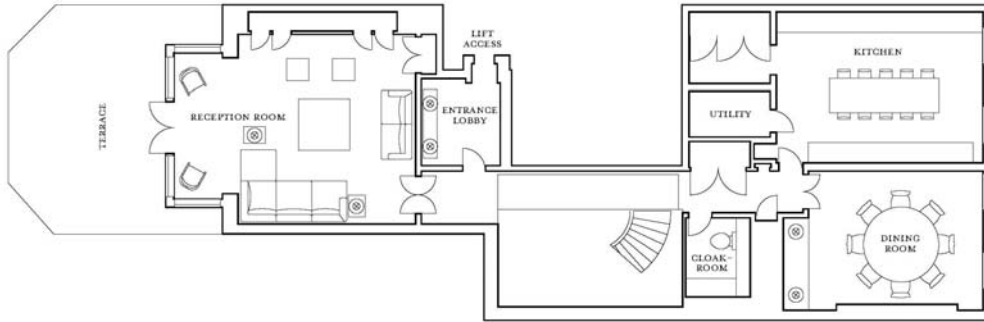
Tenure: Leasehold. 119 years remaining.
Ground Rent: £1,000 p.a.
Service Charge: £11,500 p.a.

Price: £8,250,000 / £7,500 per week





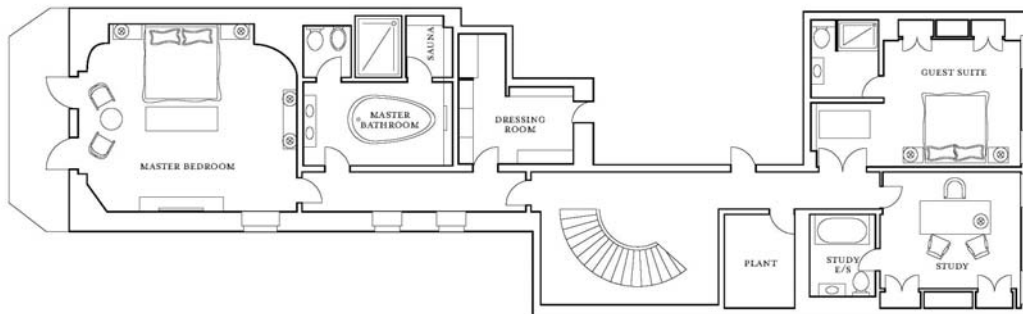
THIRD FLOOR



17 UPPER GROSVENOR STREET



SECOND FLOOR



17 UPPER GROSVENOR STREET

