



MOUNT STREET MAYFAIR W1

Overlooking Mount Street Gardens, an unmodernised maisonette (2,956 Sq Ft) on the top three floors of this period building.

## MOUNT STREET MAYFAIR WI

A 'house within a house'- a rare opportunity to purchase an apartment on three floors with south facing views of Mount Street Gardens at the rear. In need of modernisation the flat offers great space for entertaining on one of Mayfair's most desirable streets.

*Numbers 94-102 Mount Street were built in stages between 1889 and 1895 to the designs of Albert J Bolton who adopted a luscious Francois premier style with elaborate terracotta trimmings to the gables, chimneys and mullions.*

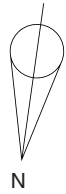


### Accommodation and Amenities

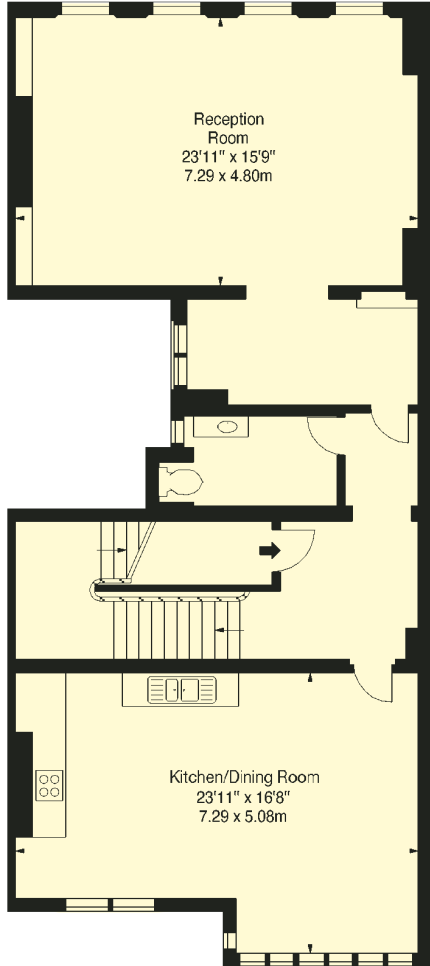
- Entrance Hall
- Drawing Room
- Kitchen/Dining Room
- Study
- Master Bedroom with En Suite Bathroom
- Three further Bedrooms
- Two further Bathrooms
- Top Floor Kitchenette
- 2,956 Sq Ft



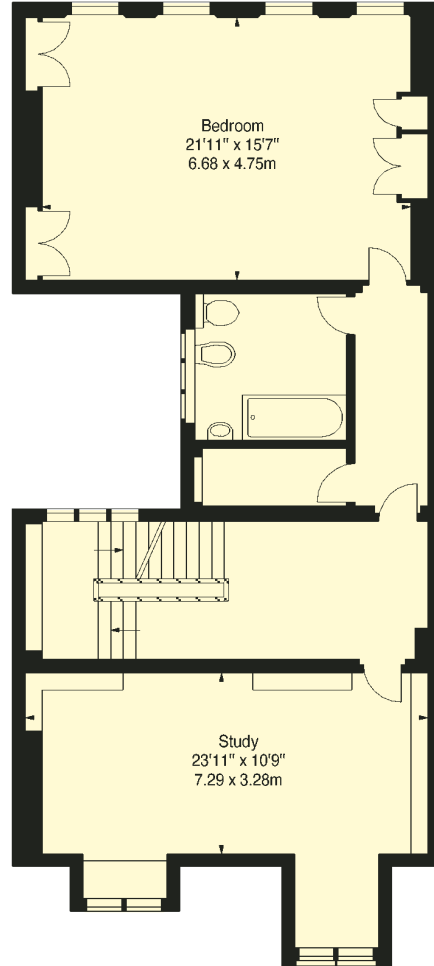




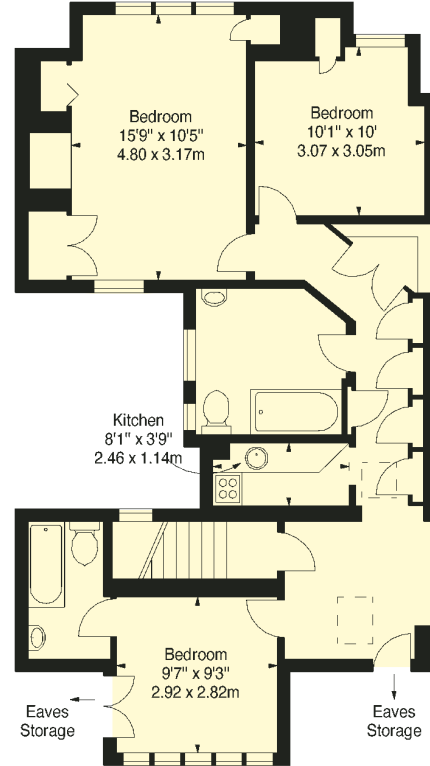
Approximate Gross Internal Area  
2,956 square feet (274.61 square metres)



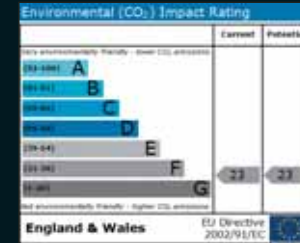
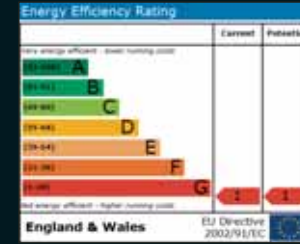
SECOND FLOOR



THIRD FLOOR



FOURTH FLOOR



Tenure: Leasehold, approximately 121 Years remaining  
Ground Rent: £100 per annum to 2040, thereafter a peppercorn  
Price: £3,750,000

Sole Agent



**WETHERELL**  
MAYFAIR'S FINEST PROPERTIES

102 Mount Street · London · W1K 2TH

**020 7529 5566**  
wetherell.co.uk

Wetherell have no authority to make or give any representations or warranties in relation to the property. These particulars do not form part of any offer or contract and must not be relied upon as statements or representations of fact. Any areas, measurements or distances are approximate. The text, photographs and plans are for guidance only and are not necessarily comprehensive. It should not be assumed that the property has all the necessary planning, building regulation or other consents and Wetherell have not tested any services, equipment or facilities. Purchasers must satisfy themselves by inspection or otherwise. August 2008

