

BALFOUR MEWS

MAYFAIR W1



BALFOUR MEWS



This charming mews house has recently been the subject of a major refurbishment and remodelling. Finished in a classical style, the house has many impressive features, as well as an adaptable lower ground floor that can be a self-contained suite for family or guests, with two bedrooms or a bedroom suite with reception/media room/study.



A charming and recently refurbished house with garage in this quiet Mayfair mews





Balfour Mews is a quiet street situated in the Heart of Mayfair Village close to South Audley Street, Mount Street and Park Lane. There are a vast range of amenities including, Mount Street Gardens and Hyde Park, as well as numerous world-famous restaurants and fashion shops situated nearby.

Double Reception Room with adjoining Roof Terrace • First floor Kitchen/Breakfast Room
 Large Master Bedroom with En Suite Bathroom • Three additional Bedrooms with two En Suite Bathrooms
 Lower ground floor Shower Room together with separate Kitchenette • Double Garage
 2,940 sq ft (273 sq m)

All new services have been installed to include full air-conditioning and category six cabling throughout for computers and telephones.

Terms

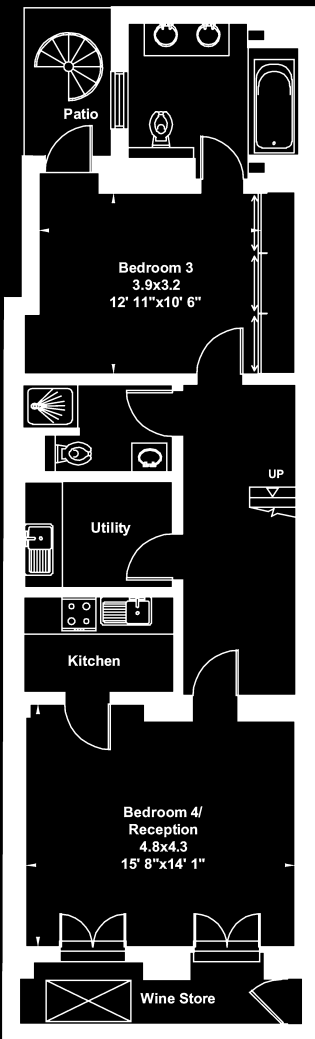
Tenure: Freehold

Price Upon Application

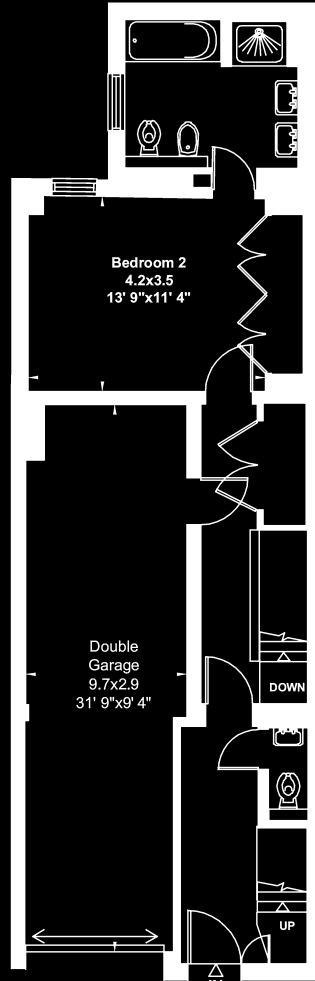




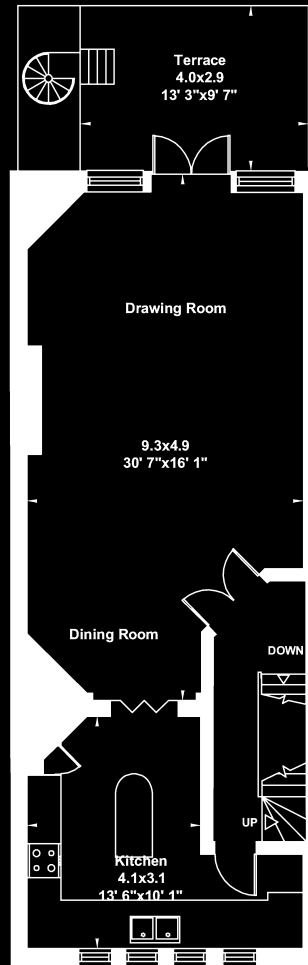
Gross Internal Area
(Approx.)
273 Sq M - 2,940 Sq Ft
Including Under 1.5m High



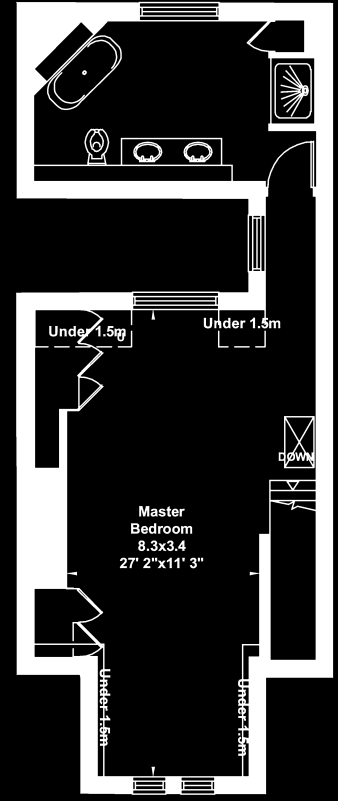
Lower Ground Floor



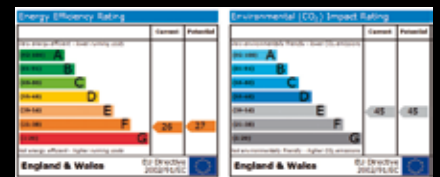
Ground Floor



First Floor



Second Floor



A copy of the full Energy Performance Certificate is available on request from the Agents.

WETHERELL
MAYFAIR'S FINEST PROPERTIES
102 Mount Street · London · W1K 2TH
020 7493 6935
wetherell.co.uk

Viewing: Strictly by appointment with Savills and Wetherell.

Important Notice

Savills, Wetherell, and their clients give notice that: 1. They are not authorised to make or give any representations or warranties in relation to the property either here or elsewhere, either on their own behalf or on behalf of their client or otherwise. They assume no responsibility for any statement that may be made in these particulars. These particulars do not form part of any offer or contract and must not be relied upon as statements or representations of fact. 2: Any areas, measurements or distances are approximate. The text, photographs and plans are for guidance only and are not necessarily comprehensive. It should not be assumed that the property has all necessary planning, building regulation or other consents and neither Savills nor Wetherell have tested any services, equipment or facilities. Purchasers must satisfy themselves by inspection or otherwise. 05/09 240118

139 Sloane Street
London SW1X 9AY

savills.co.uk **savills**

020 7730 0822