

# SALTER REX

HAMPSTEAD



**SOUTH HILL PARK GARDENS, NW3**  
**£475,000 LEASEHOLD**

## LOUNGE



## SOUTH HILL PARK GARDENS, NW3

A well presented two bedroom, two bathroom, first floor flat in a period building. Use of communal gardens, fully fitted kitchen with built-in facilities, leasehold of 101 years remaining.



## BEDROOM

Salter Rex Residential Estate Agents for themselves and for the Vendors or Lessors of this property whose Agents they are, give notice that:-

1. These particulars do not constitute, nor constitute any part of, an offer or contract. Statements contained in these particulars as to this property are made without responsibility on the part of Salter Rex, the Vendors or Lessors. None of the statements contained in these particulars as to this property are to be relied upon as statements or representation of fact. All dimensions given are approximate only.
2. Any intending purchasers must satisfy themselves by inspection or otherwise as to the correctness of each of the statements contained in these particulars. The Vendor or Lessor does not make or give and neither Salter Rex Residential nor any person in their employment has any authority to make or give any representation or warranty whatsoever in relation to this property.

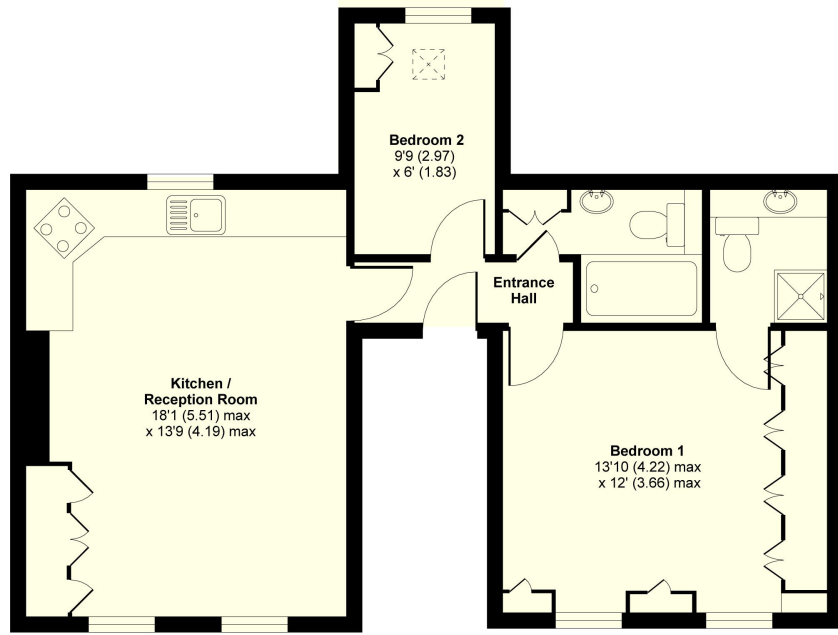
## KITCHEN



## EN-SUITE WET ROOM

- \* TWO BEDROOMS \*
- \* TWO BATHROOMS (ONE EN-SUITE) \*
- \* KITCHEN/DINER \*
- \* COMMUNAL GARDEN \*
- \* MINUTES FROM THE HEATH \*

# FLOOR PLAN



FIRST FLOOR

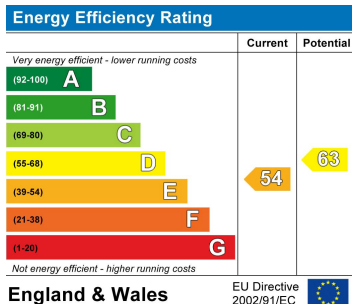
GROSS FLOOR AREA  
INTERNAL 576 SQFT 53.5 SQMETRES

## South Hill Park Gardens, London NW3

Whilst every attempt has been made to ensure the accuracy of the floor plans contained here, measurements of doors, windows and rooms are approximate and no responsibility is taken for any error, omission or mis-statement. These plans are for representation purposes only as defined by RICS Code of Measuring Practice and should be used as such by any prospective purchaser. The services, systems and appliances listed in this specification have not been tested by Salter Rex and no guarantee as to their operating ability or their efficiency can be given.

Copyright nichecom.co.uk 2008 Produced for Salter Rex REF : 08-13250

### ENERGY PERFORMANCE CHART



### CONTACT DETAILS

**SALTER REX**  
HAMPSTEAD

47 SOUTH END ROAD  
HAMPSTEAD  
LONDON  
NW3 2TP  
T 020 7431 1881 F 020 7431 4321  
E: [hampstead@salter-rex.co.uk](mailto:hampstead@salter-rex.co.uk)  
W: [www.salter-rex.co.uk](http://www.salter-rex.co.uk)

