

WETHERELL

MAYFAIR'S FINEST PROPERTIES

No-one knows Mayfair better than Wetherell



PARK STREET, MAYFAIR, W1

A lovely, good sized one bedroom apartment on the fourth floor. It is an ideal pied a terre, located close to Oxford Street and Hyde Park.

£ 550 per week
Furnished



T: +44 (0) 20 7493 6935

E: mail@wetherell.co.uk

wetherell.co.uk

102 Mount Street · London · W1K 2TH



Wetherell & Co. (Mayfair) Ltd · Registered in England & Wales Number 2651793



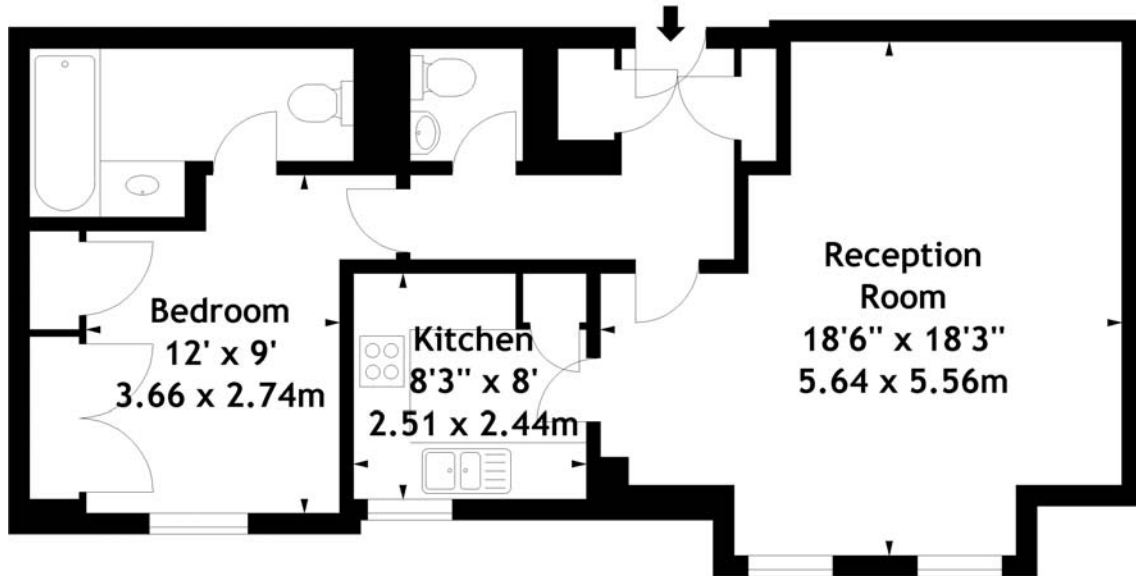
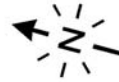
PARK STREET, MAYFAIR, W1

* Reception Room * Kitchen * Double Bedroom with En Suite Bathroom * Guest Cloakroom * Lift * Caretaker * 643 Sq ft





Park Street, W1
Approx. Gross Internal Area
643 Sq Ft - 59.73 Sq M



Fourth Floor

Measured in accordance with RICS guidelines. Every attempt is made to ensure accuracy, however all measurements are approximate. This floor plan is for illustrative purposes only and is not to scale.

© Datography UK Ltd 2008
Photographs * Floorplans * Virtual Tours
Tel: 08707 66 30 30 www.datography.com

