

NEW BURLINGTON PLACE MAYFAIR W1



A Tucked Away House (693 square feet)
Between Bond Street & Regent Street

£750,000

SOLE AGENT



T: +44 (0) 20 7493 6935
E: mail@wetherell.co.uk
wetherell.co.uk
102 Mount Street · London · W1K 2TH





NEW BURLINGTON PLACE

MAYFAIR W1

New Burlington Place, at the northern end of Savile Row, is a landscaped pedestrian thoroughfare to Regent Street and home to the Crown Estate's head office.

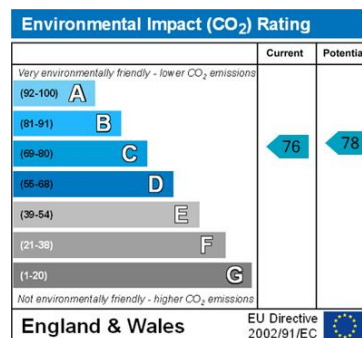
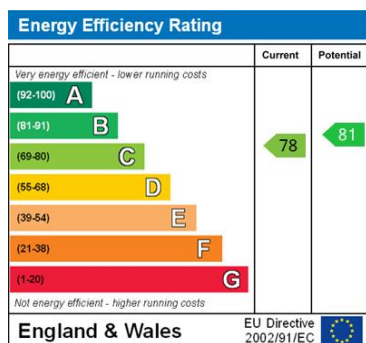
Possibly the smallest house in Mayfair (!) this great Pied a Terre was newly built in the 1990's and is an ideal 'hide away' but with Mayfair on it's doorstep.

- * Entrance Hall
- * Reception Room
- * Kitchen
- * Bedroom
- * Bathroom
- * Independent Gas Central Heating
- * 693 Square Feet

Tenure: Leasehold, approximately 57 years remaining

Ground Rent: £200 per annum

Price: **£750,000**



Wetherell & Co have no authority to make or give any representation or warranty whatever in relation to this property. These particulars do not form part of any offer or contract nor be relied upon as statements or representations of fact. All statements contained in these particulars as to this property are made without responsibility on the part of the agent. Any areas, measurements or distances, text, photographs and plans are for guidance only and are not necessarily comprehensive. It should not be assumed that the property has all the necessary planning, building regulation or other consents and Wetherell have not tested any services, equipment or facilities. Purchasers must satisfy themselves by inspection or otherwise. February 2010

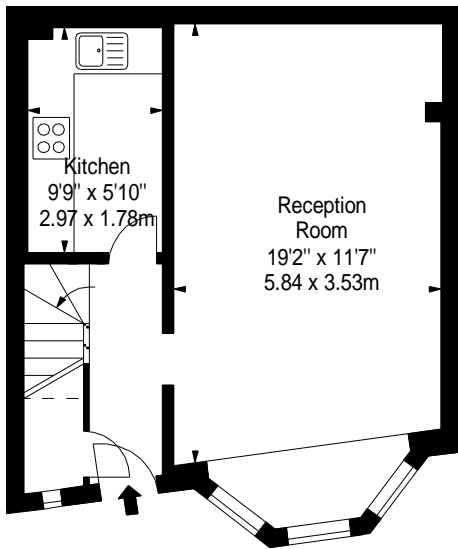


NEW BURLINGTON PLACE

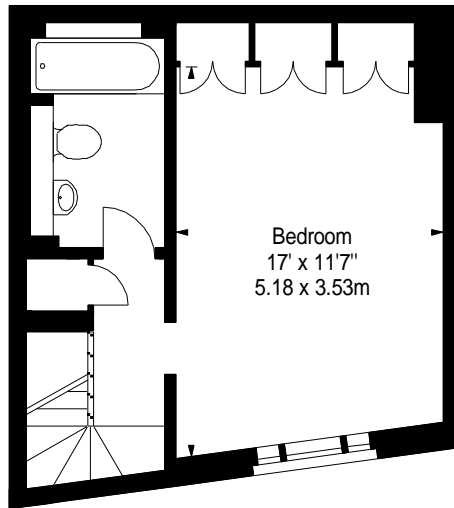
MAYFAIR W1



**9 New Burlington Place,
Mayfair, W1**
Approx. Gross Internal Area *
693 Ft² - 64.38 M²



Ground Floor



First Floor

Illustration For Identification Purposes Only. Not to Scale

* As Defined by RICS - Code of Measuring Practice

BKR
FLOORPLANS

(OFFICES THROUGHOUT THE UK)

T: 0845 257 2023
WWW.BKRFLOORPLANS.CO.UK
2008